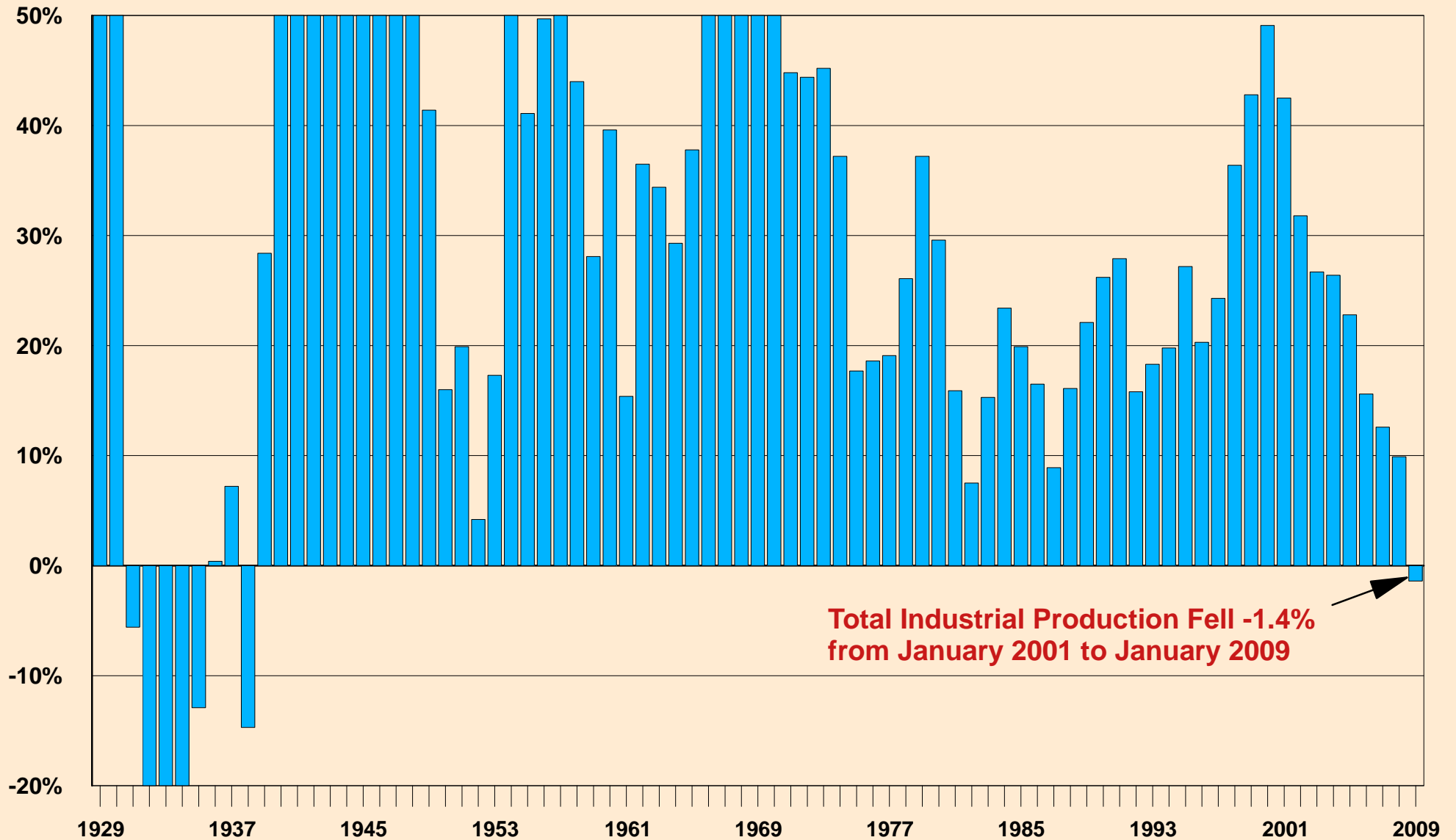


# First 8-Year Loss of Industrial Production Since the Depression

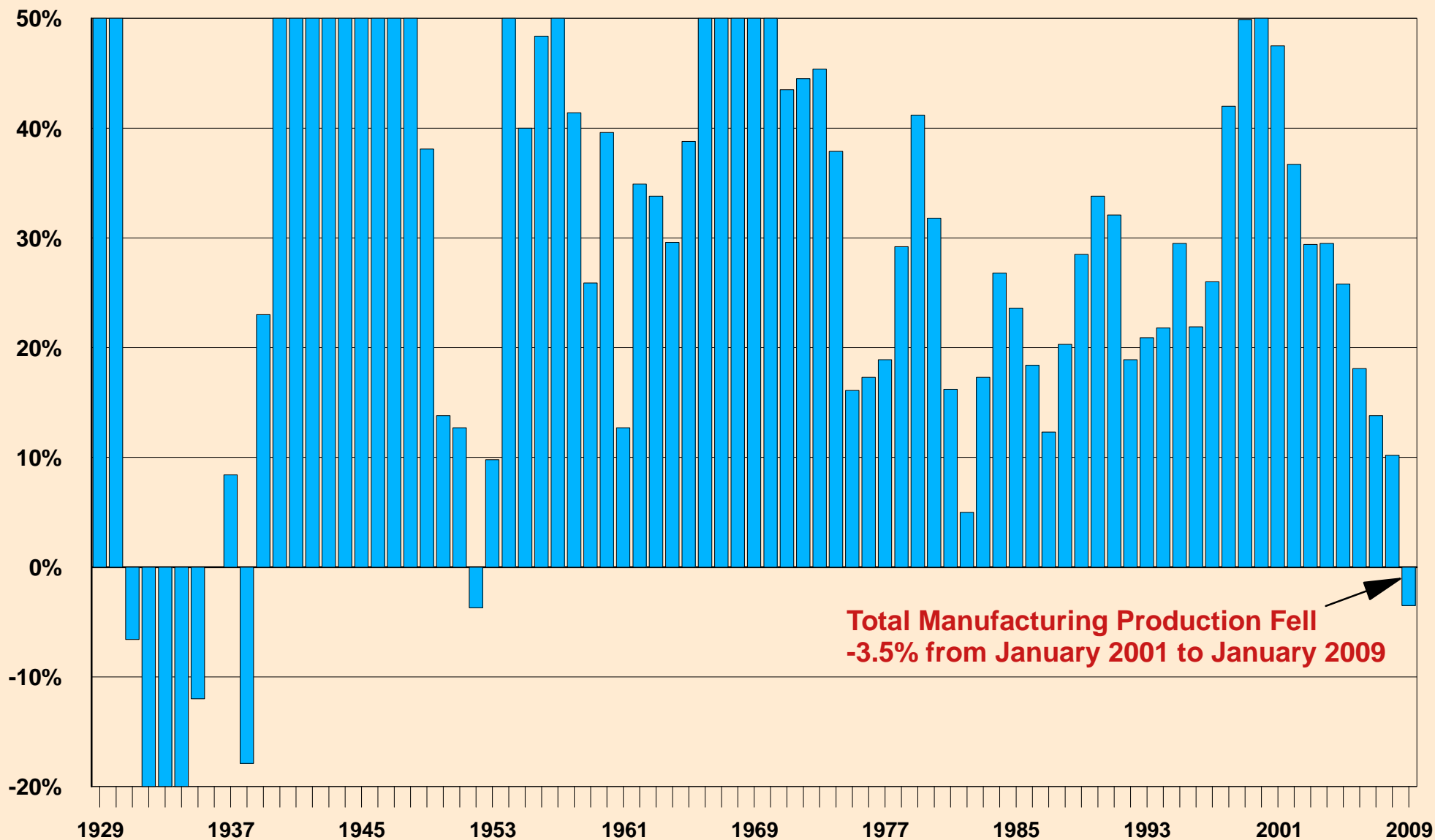
% Change in total Industrial Production: 8-Yrs Ending January each year



Total Industrial Production Fell -1.4%  
from January 2001 to January 2009

# First 8-Year Loss of Manufacturing Production Since WWII's End

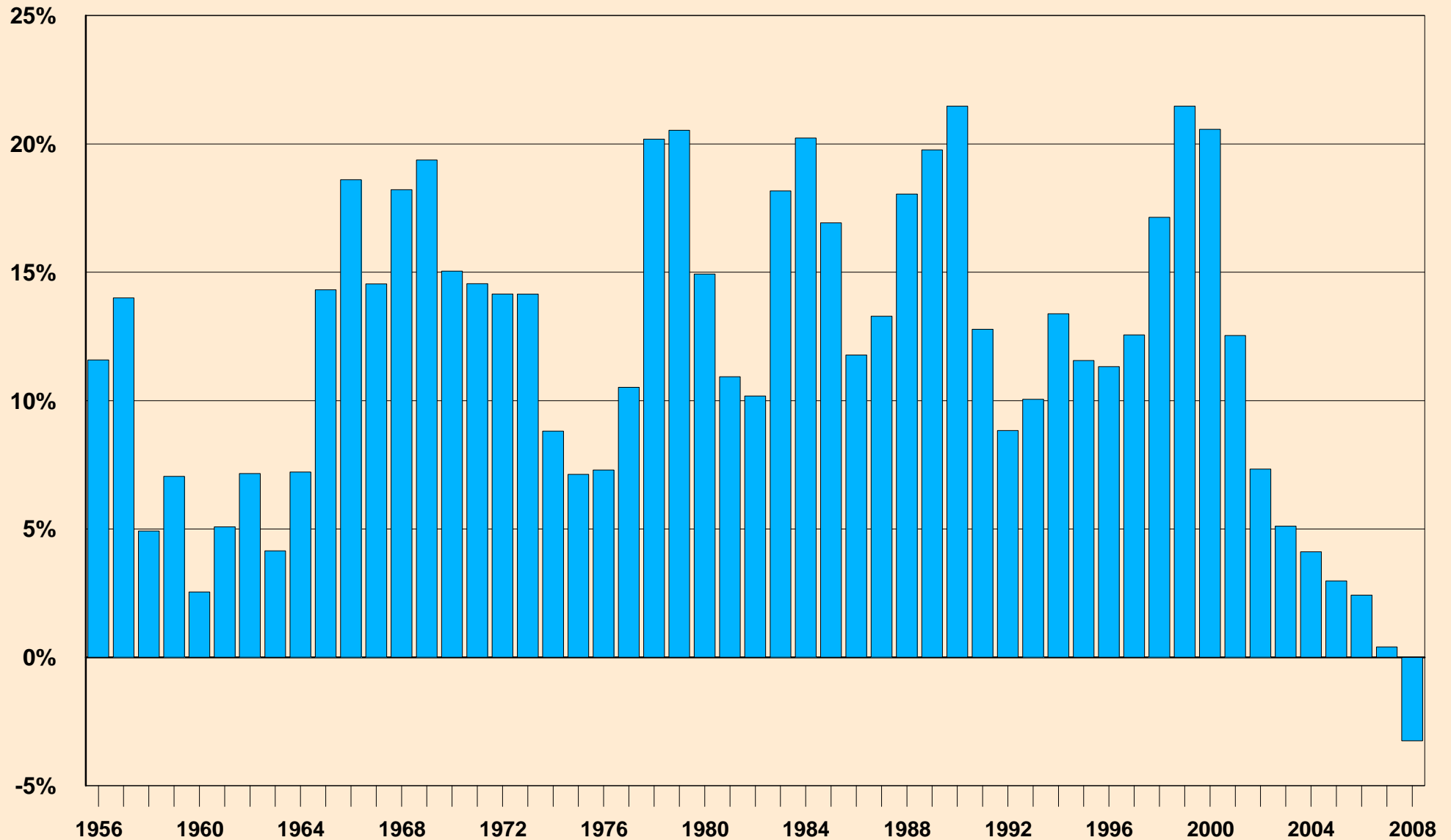
% Change in total Industrial Production: 8-Yrs Ending January each year



**Total Manufacturing Production Fell  
-3.5% from January 2001 to January 2009**

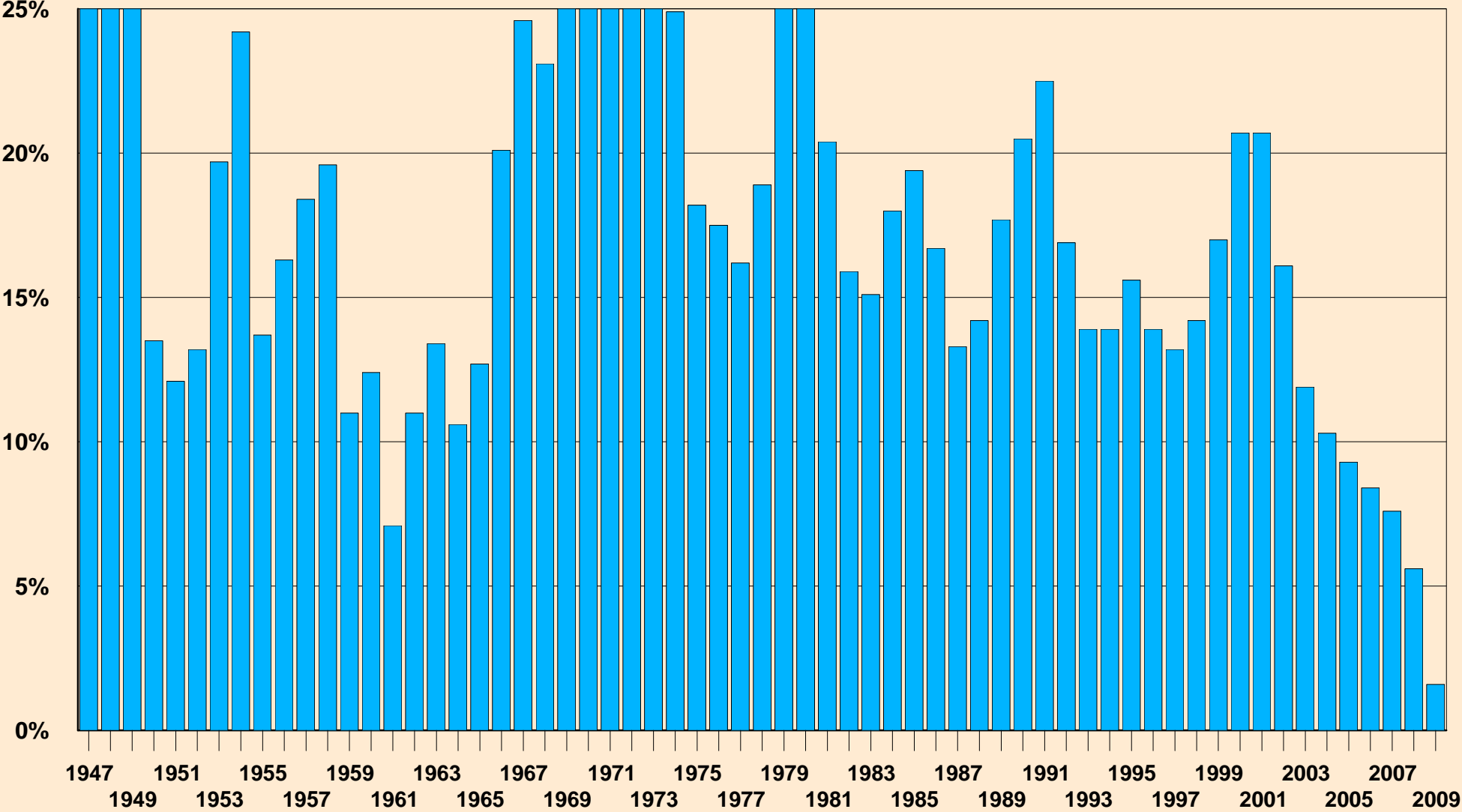
# First 8-Year Decline in Total Hours Worked Since the Depression

% Change in total hours worked in non-farm business: eight years ending in Q4 of each year



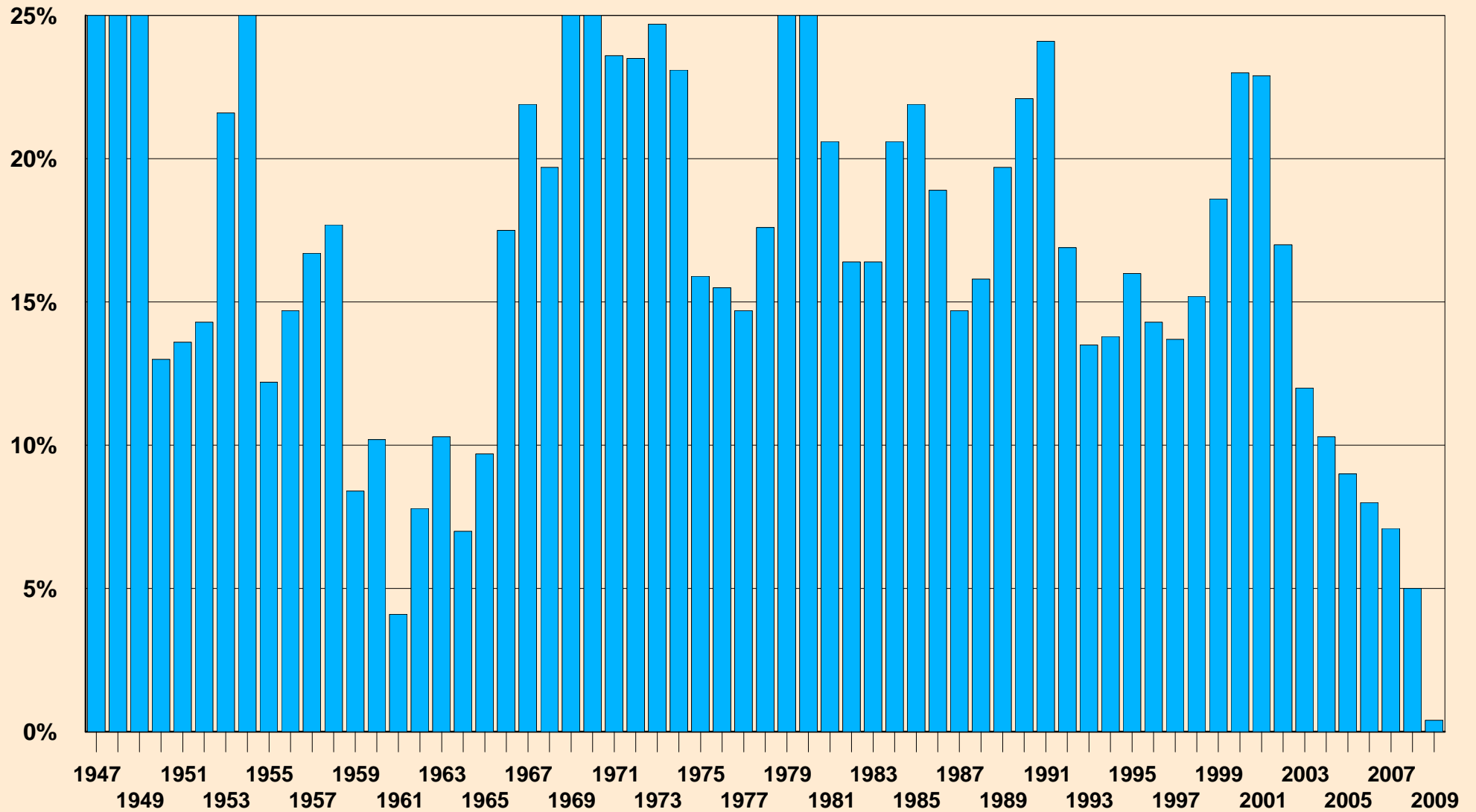
# Worst 8-Year US Job Growth Since 1927-1935

% US Job Growth: Eight Years Ending January Each Year



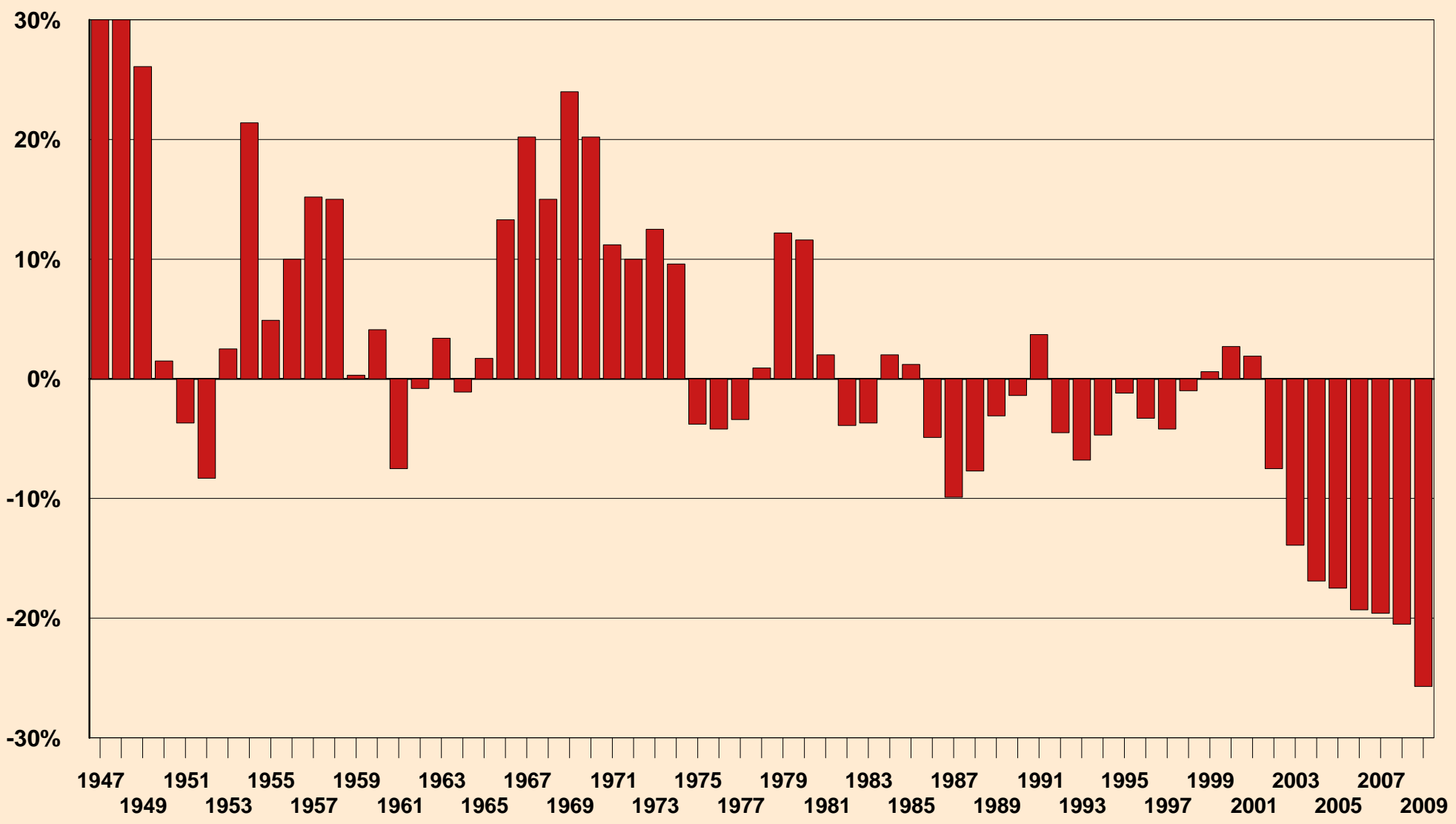
# Worst 8-Year Private Sector Job Growth Since 1927-1935

% US Private Sector Job Growth: Eight Years Ending January Each Year



# 8-Year Plunge of Manufacturing Jobs; Worst Since 1933-Q1

% US Manufacturing Job Growth or Loss: Eight Years Ending January Each Year



# Worst 8-Years For Private Sector Service Jobs Since 1927-1935

% Growth of US Jobs in Private Service Providing Sectors: Eight Years Ending January Each Year

