

Michigan's Worsening Eight-Year Depression: Paying the Price for -\$1 Trillion in US Auto-Trade Losses

Dr. Charles W. McMillion
President & Chief Economist
MBG Information Services
Washington, DC
www.mbginfosvcs.com

September 2008

Prepared for

The American Manufacturing Trade Action Coalition
910 16th Street, NW, Suite 760
Washington, DC 20006
Telephone: (202) 452-0866 Fax: (202) 452-0739

Michigan's Worsening Eight-Year Depression: Paying the Price for -\$1 Trillion in US Auto-Trade Losses

Dr. Charles W. McMillion

Michigan has experienced the ups and down of business cycles throughout its history. But it may never before have experienced such a long depression of economic activity as it is suffering today. And with the US economy now in or near recession and facing the worst debt crises since the early 1930s, Michigan's long depression seems likely to continue and to worsen -- perhaps severely -- unless there are urgent and strong changes in economic and trade policies.

Michigan lost -489,900 jobs from July 2000 to July 2008. This -10.6% job loss is more than three times worse than the state's only other 8-year period of recorded job losses during the oil-shock-induced "rust belt" crisis from 1974-1982.

There are no data for state jobs during the period of the Great Depression. Certainly the chaotic -24.6% US job loss from 1929 to 1932 was vastly more severe than losses in any subsequent three year period. But strong New Deal policy changes restored jobs over the next five years to within -1% of 1929 levels. That is, eight years after the start of the Great Depression, US job totals in 1937 were -1% below pre-depression peak levels.¹

From July 2000 to July 2008, total US jobs increased by only 4.1%, the weakest 8-year period of job growth since 1930-1938. The loss of -3.8 million manufacturing jobs, -21.9%, is the worst on record.

Similarly, US GDP plunged by -26.5% from 1929 to 1933 but fully rebounded after seven years, in 1936, and never again fell below pre-depression levels. Michigan's recent GDP never plunged precipitously but neither has it recovered, falling -1.9 over the seven years from 2000 to 2007 and almost certainly declining further in 2008.

From 2000-Q2 to 2008-Q2, total US GDP grew by only 18.8%; the weakest 8-year period of economic growth since World War II demobilization from 1945 to 1953 when growth was just 16.4%.

And yet, expanded debt stimulus and dis-savings over the past eight years are unprecedented. Total federal debt soared by \$4 Trillion (from \$5.7 to \$9.7 Trillion) while household debt, including mortgages, rocketed by another \$7.2 Trillion (from \$7.4 to \$14.6 Trillion.) This \$11.2 Trillion in new debt stimulated just \$4.4 Trillion in nominal GDP growth and just 5.1 million in new US jobs -- \$2.2 million per job. Ratios of federal and household debt to GDP, to disposable incomes, net worth and every other financial indicator, have soared to far above any past levels even during World War II.

Along with record debt levels, total US household savings from current after-tax income has virtually disappeared. The total savings rate over the past eight years is just 1.3%; less than half the 2.9% average rate from 1929 to 1937. Over the past four years, the average savings rate is just 0.5%, about one-third of the 1.4% average rate even during the worst four years of the Great Depression.

¹ Early job and employment data are available in US Department of Commerce, Bureau of the Census, Historical Statistics of the United States; Colonial Times to 1970, (Washington, DC: GPO, 1975) Volume I, Series D-127, page 137 and D-5, page 126.

Global commercial pressures are key factors in Michigan's depression and for the soaring debt and weak growth throughout the US. Past surpluses in production and trade were lost to anti-regulatory ideology in 1982 with large production shortages, trade deficits and net foreign borrowing ever since.

Although US GDP growth has been slower than world growth in each of the past eight years, over this time the US accumulated production shortages/current account deficits totaling -\$4.4 Trillion, including (non oil) manufacturing deficits of -\$3.5 Trillion. Of importance to Michigan, over the past eight years US production shortages/trade deficits in the vehicles and parts sector exceed -\$1 Trillion.

Remarkably naive or cynical claims of well-promoted "experts" have been used to ignore the actual experience and to promote deregulation of global commerce and investments. As a result, the US now imports half again as many autos from Mexico (1,009,300 in 2007) as the US exports to the entire world (673,100 in 2007,) including to Mexico. Record US production losses and trade deficits to China have tripled over the past eight years, totaling over -\$1.4 Trillion and eliminating two million jobs, one million in the last eight years. US net imports from China are concentrated in electronics, machinery and advanced technology products, with auto sector imports now accelerating very rapidly.

Michigan has lost -\$8.6 billion of annual production and -65,500 jobs to net imports from China. Over the past eight years, Michigan lost -315,200 of its manufacturing jobs, an unprecedented -35.5% loss.

Average annual compensation per job in Michigan is -33.4% less than for manufacturing jobs and that gap is widening with the downgrading of the state's job structure. That is, although most business sectors are losing jobs in Michigan, the overwhelming majority of new jobs pay far less than manufacturing and most new jobs pay less even than the state's overall average.

Most new jobs are in private health care and education bureaucracies, debt collection agencies, and in bars and restaurants where the average compensation is far less than the state's average. The only industry segments adding jobs with higher average compensation than in manufacturing have been in the financial sector for stock brokers and fund managers where job growth was limited even before the most recent financial downturn.

As a result of the downgrading job structure, Michigan's per-capita income has fallen from its historic status at-or-above the national average to a record low now of only 93% of the US average income.

All of Michigan's metropolitan areas have fewer jobs today than they had eight years ago. The worst job losses are in Detroit-Livonia (-16.6%,) Flint, Jackson and Saginaw. The worst manufacturing job losses are in Flint (-54.6%!) Ann Arbor, Saginaw and Detroit-Livonia. As throughout the US, every manufacturing industry and almost every other industry facing imports or outsourcing is losing jobs.

Michigan's worsening eight-year depression, the weakest overall US economy in 55 years, and the unprecedented mountain of unsustainable debt accumulated in recent years demand forceful and immediate measures on the scale of those undertaken in 1933. Continued failure of political leaders to address these urgent matters with appropriate industry and trade policy actions could have lasting consequences for Michigan, for the US and for the world economy.

Charles W. McMillion, president and chief economist of MBG Information Services in Washington, DC. He is a former associate director and professor in the Johns Hopkins University policy institute and a former contributing editor of the Harvard Business Review. Contact: 202.544.6490

Table of Contents

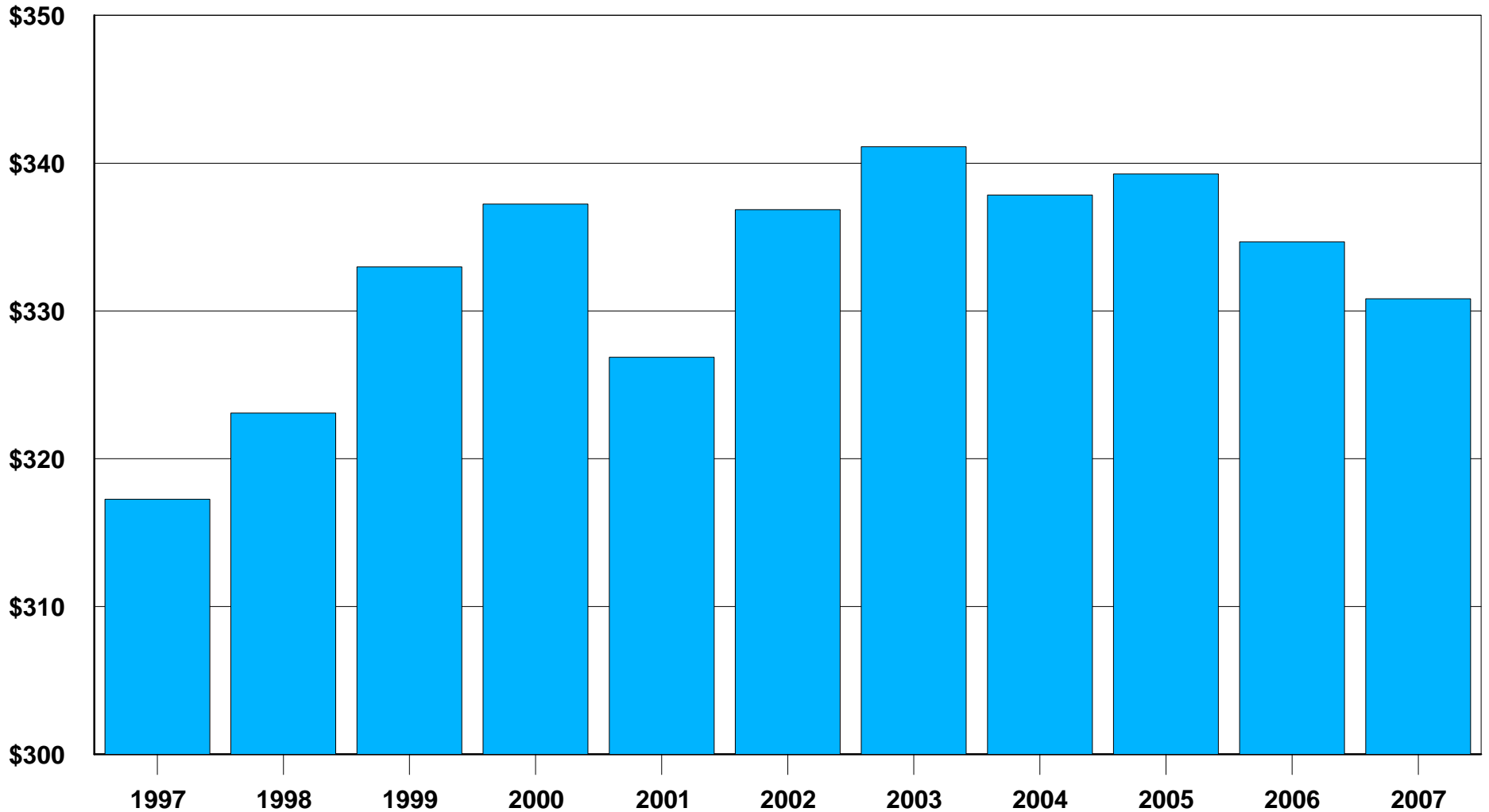
Page

i-ii Executive Summery

1	Michigan's Real GDP: -1.9% Decline 2000 to 2007
2	US Household and Federal Debt: from \$2.3 Trillion in 1980 to over \$24 Trillion today
3	Household and Federal Debt Percent of GDP: post-WWII debt levels fell but now far exceed WWII peak.
4	Personal liabilities soar vs disposable income.
5	Household savings vanish
6	-\$4.4 Trillion in US global losses/borrowing since 2001
7	Worst ever US losses in manufacturing goods trade
8	Over -\$1 Trillion in US trade deficits from the auto vehicles sector: 2000-2007
9	Mexico now exports 50% more autos to the US than the US exports to the world
10	US trade balance with China: 1985-2007
11	The cost in jobs of China trade deficits: 2000 to 2007: worsening trade losses just since 2000 cost 1 million jobs
12	Slowest 8-year US job growth since the Depression
13	8-Year loss of US manufacturing jobs: worst on record
14	The recent jobs record in the states: 2000 to 2008
15	State manufacturing jobs losses/gains: 2000 to 2008
16	Michigan's job gains/losses: recent sustained job losses are -- by far -- the worst on record
17-18	Michigan's job and compensation losses; trading away high wage jobs: 2001-2006
19	Michigan's average income vs US average: far below US average
20-21	The recent jobs record in Michigan: 2000 to 2008
22	The jobs record in Ann Arbor and Battle Creek, Michigan: 2000 to 2008
23	The jobs record in Detroit-Livonia-Dearborn, Michigan: 2000 to 2008
24	The jobs record in Detroit-Warren-Livonia, Michigan: 2000 to 2008
25	The jobs record in Flint and in Grand-Rapids-Wyoming, Michigan: 2000 to 2008
26	The jobs record in Hollard-Grand Haven and in Jackson, Michigan: 2000 to 2008
27	The jobs record in Kalamazoo-Portage and in Lansing-East Lansing, Michigan: 2000 to 2008
28	The jobs record in Muskegon-Norton Shores and in Niles-Benton Harbor, Michigan: 2000 to 2008
29	The jobs record in Saginaw-Saginaw Township North, Michigan: 2000 to 2008
30	The jobs record in Warren-Troy-Farmington Hills, Michigan: 2000 to 2008
31-34	US' 7 ½ year jobs record; just 3.5 million private sector jobs: January 2001 to June 2008
35	Michigan Metropolitan Area (MSA) Definitions

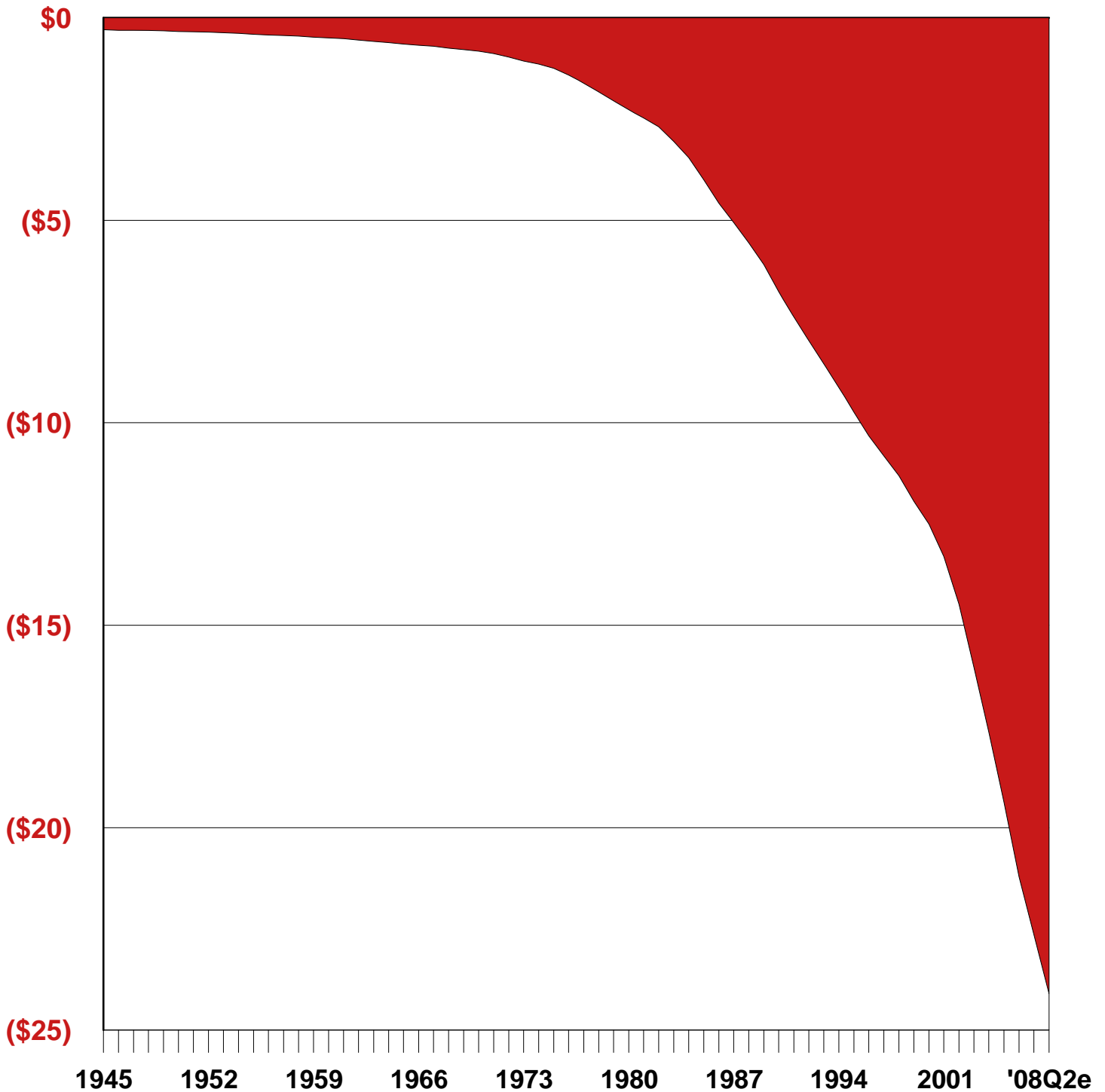
Michigan's Real GDP: -1.9% Decline 2000-2007 (US Real GDP Rose 0.2% 1929-1936)

\$ Billions at Constant Prices for 2000



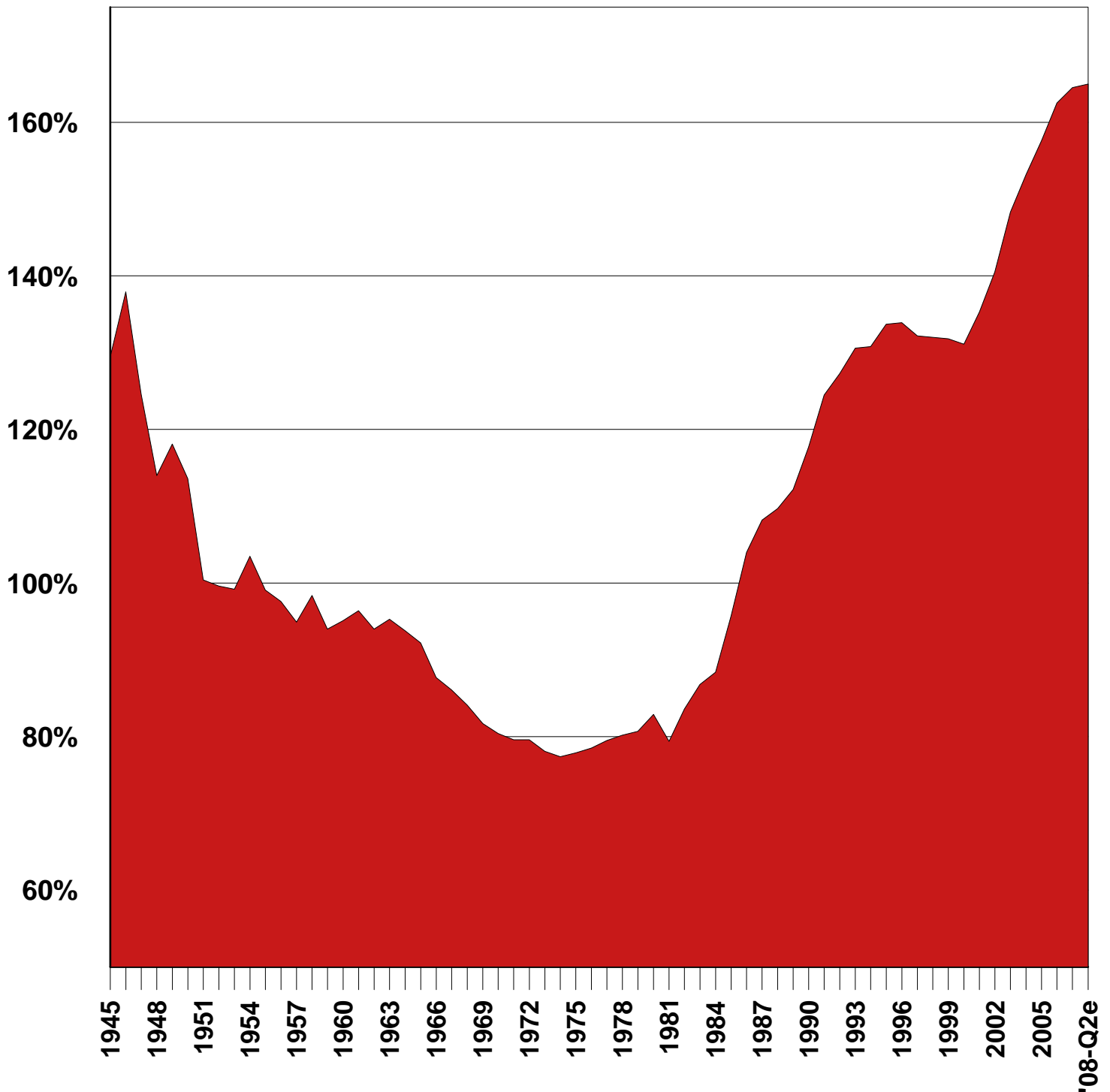
US Household and Federal Debt: From -\$2.3 Trillion in 1980 to over -\$24 Trillion Today

\$ Trillions: Combined total debt of US Households & Federal Govt.



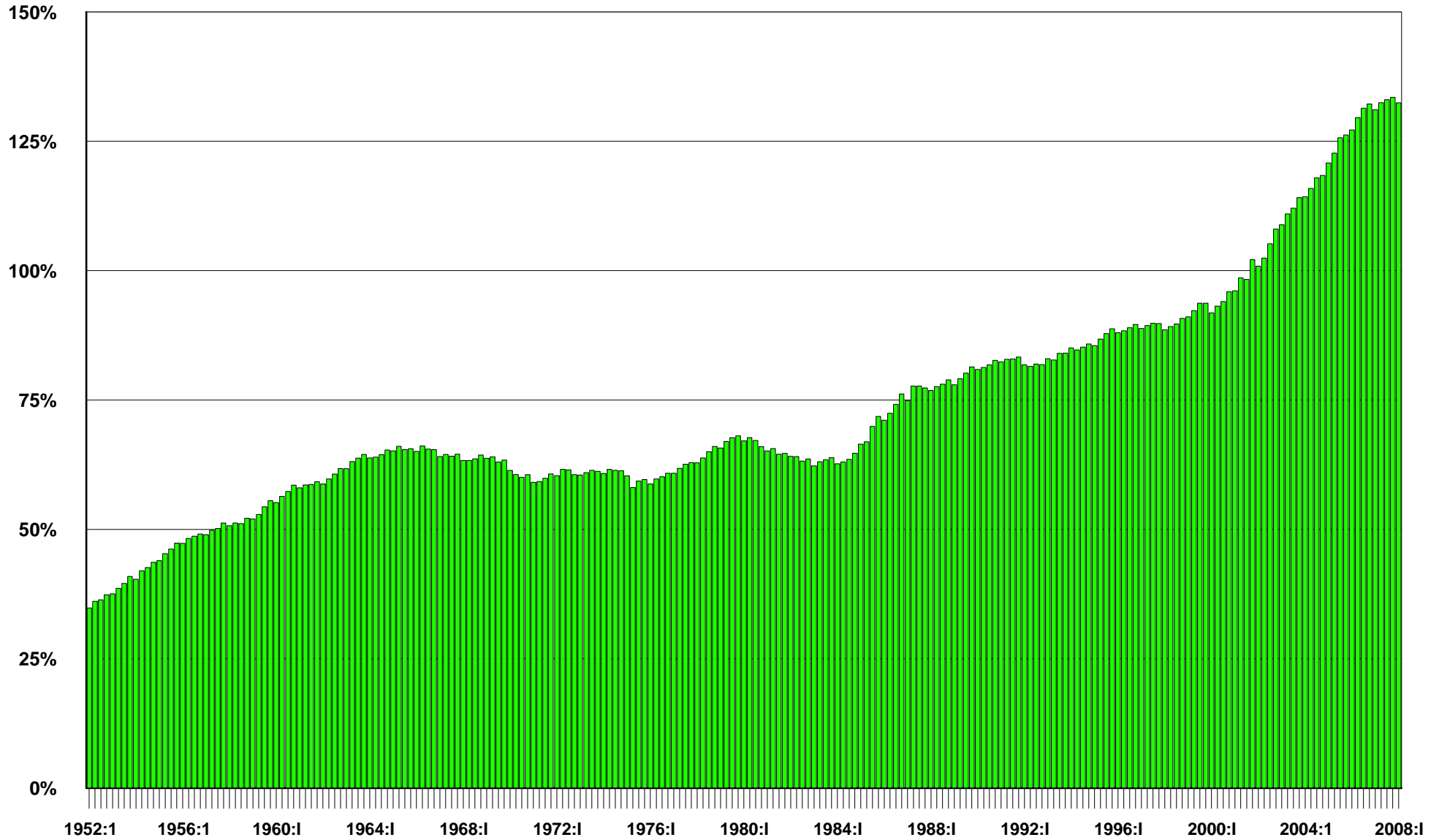
Household and Federal Debt Percent of GDP: Post-WWII Debt Levels fell until 1981 but now far exceed WWII peak

% Debt to GDP each Year



Personal Liabilities Soar vs Disposable Income

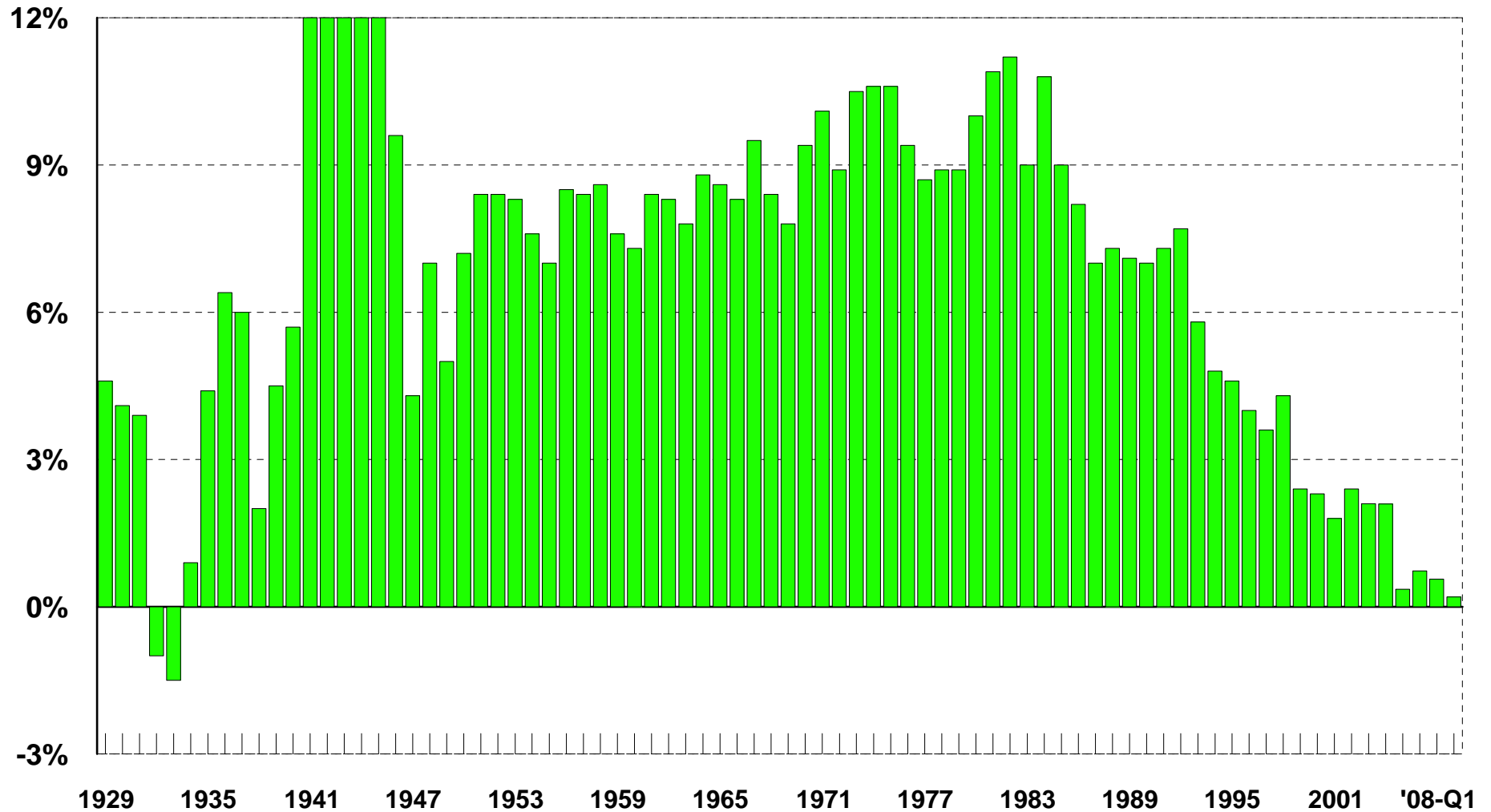
Total Personal Liabilities as Percent of Annual Personal Disposable Income



Household Savings Vanish

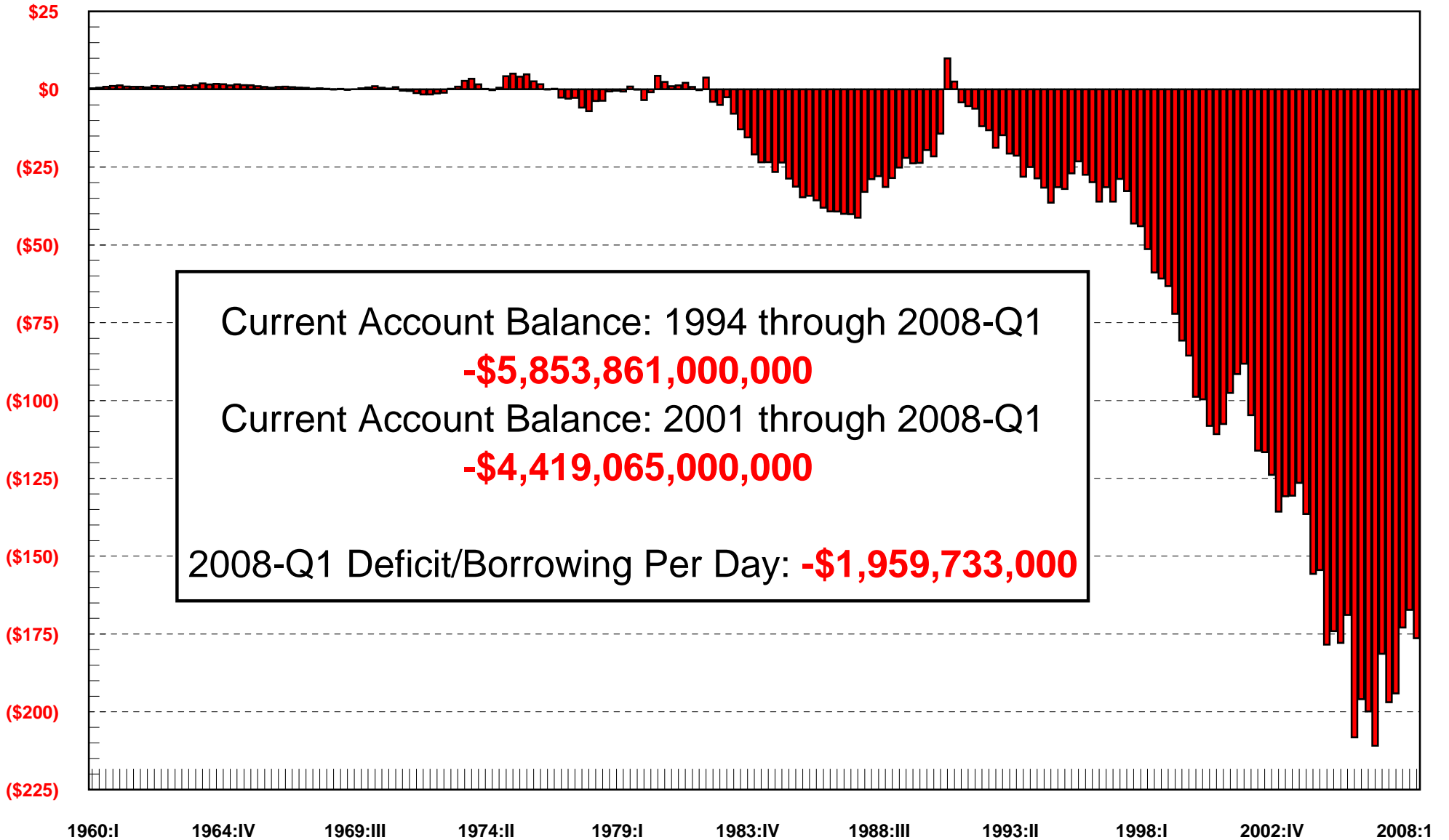
Meager Savings of All (not median) Households in Last 4 Years is Unprecedented Since 1933

% Current Household Savings to Disposable Income



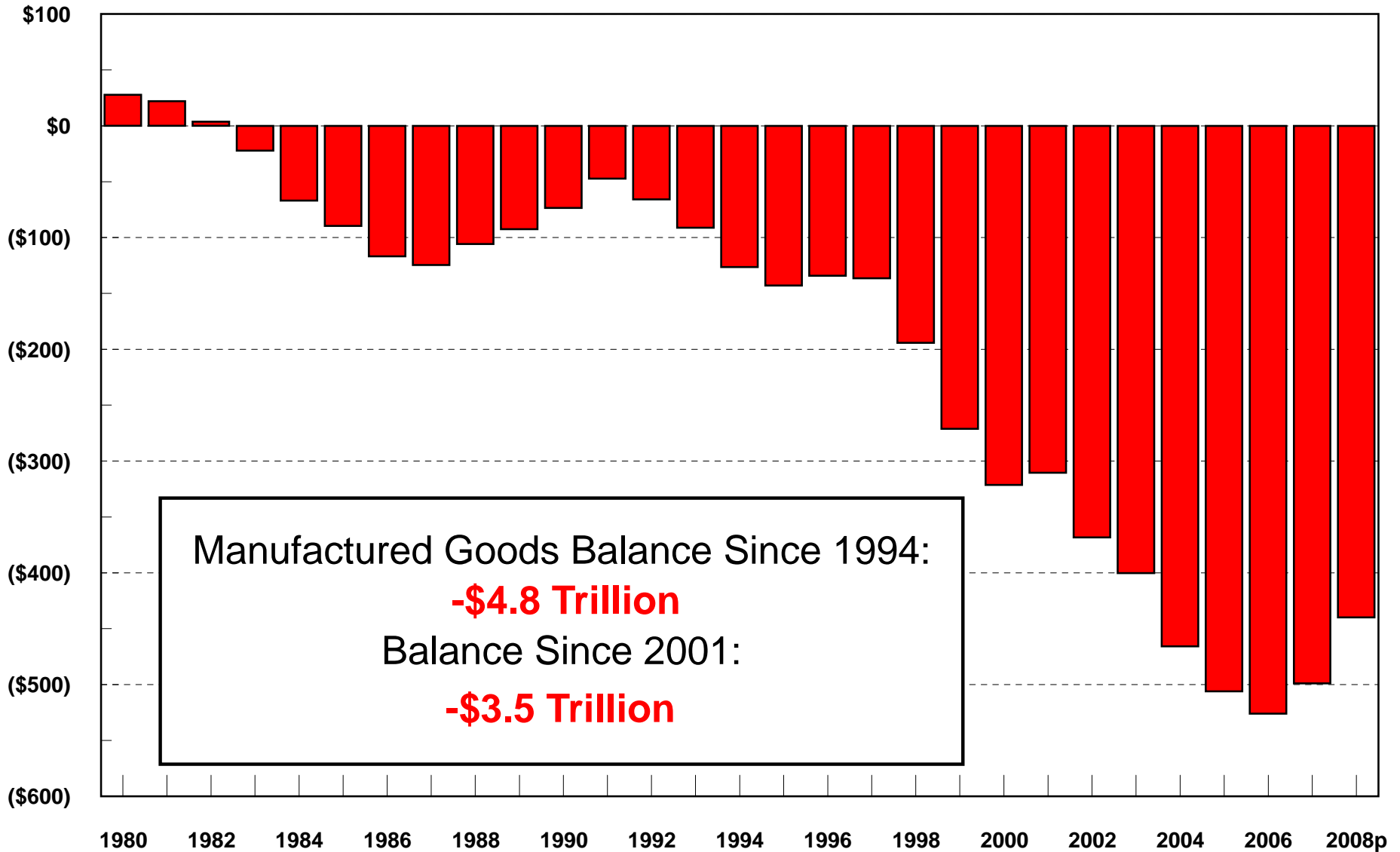
-\$4.4 Trillion in US Global Losses/Borrowing Since 2001

\$ Billion: US Quarterly Balances in All Global Current Accounts



Worst Ever US Losses in Manufactured Goods Trade

\$ Billion: US Annual Balances in Manufactured Goods Trade



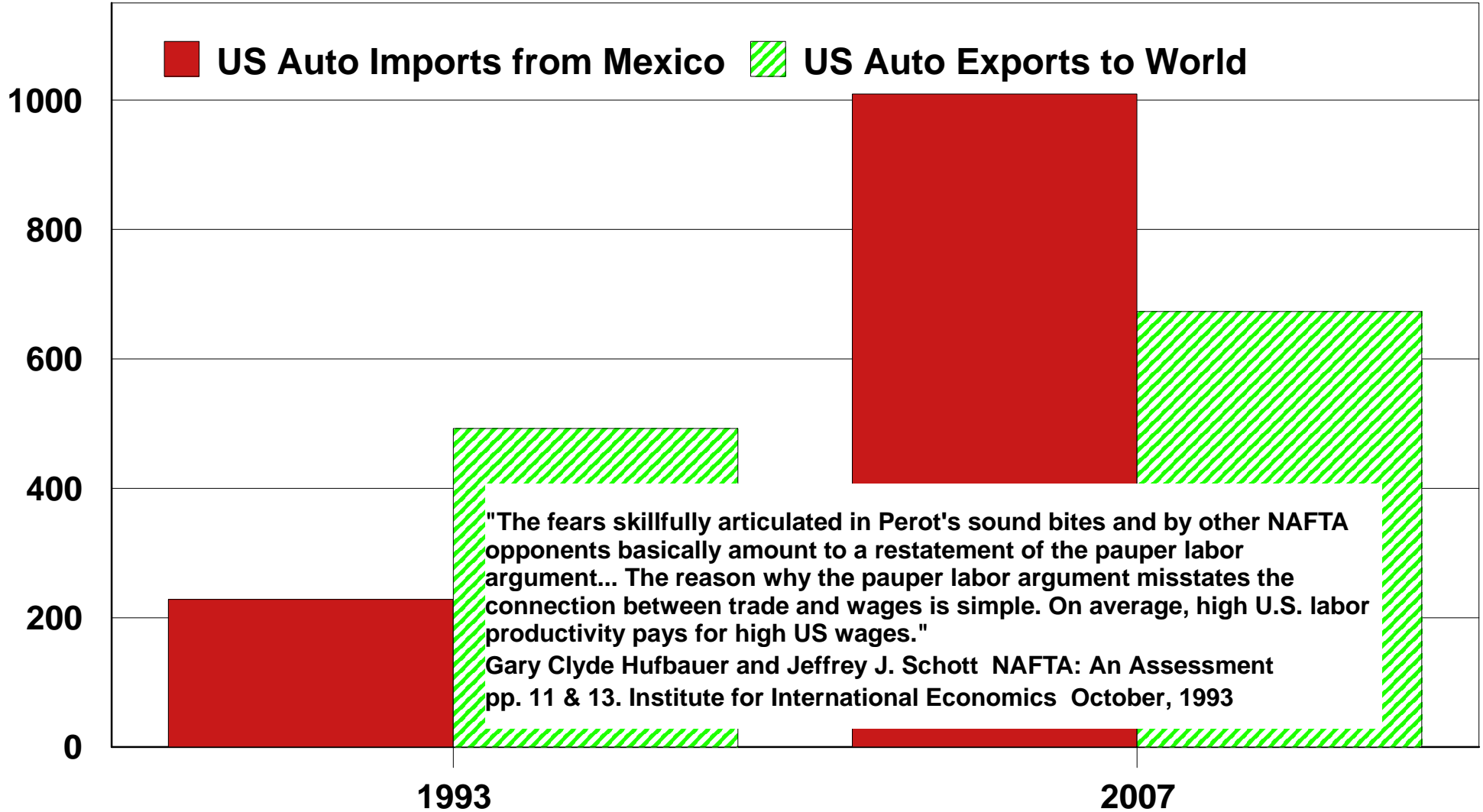
Over -\$1 Trillion in US Trade Deficits from the Auto Vehicles Sector: 2000 to 2007

Net Exports (\$Millions)	Cars, Trucks & Parts Totals													Cars												
	1995	1996	1997	1998	1999	2000	2001	2002	2003	2004	2005	2006	2007	1995	1996	1997	1998	1999	2000	2001	2002	2003	2004	2005	2006	2007
TOTAL	-\$63,088	-\$65,891	-\$68,540	-\$79,787	-\$106,559	-\$117,686	-\$115,502	-\$124,842	-\$127,842	-\$137,409	-\$138,532	-\$144,746	-\$121,484	-\$47,092	-\$50,064	-\$56,117	-\$64,663	-\$80,145	-\$92,525	-\$88,758	-\$93,527	-\$92,254	-\$97,952	-\$93,234	-\$100,759	-\$90,376
Australia.....	817	875	548	627	447	575	485	569	828	896	1,090	1,493	1,997	92	56	-140	37	48	-26	-56	-28	125	-86	35	113	635
Austria.....	725	657	473	842	943	770	282	424	-240	-985	-132	-1,362	-3,501	14	12	5	14	8	-38	-623	-292	-505	-1,234	-581	-1,905	-3,591
Belgium.....	7	-93	-20	-364	-505	-588	-730	-564	-604	-1,004	-1,048	-671	-282	-381	-504	-835	-955	-887	-838	-898	-839	-820	-1,180	-1,146	-787	-492
Brazil.....	-141	-364	-446	-444	-964	-987	-1,080	-1,428	-1,500	-1,373	-1,635	-1,770	-772	377	143	203	62	18	-145	-614	-617	-534	-214	-201	-137	16
Canada.....	-11,065	-12,707	-11,320	-13,410	-19,462	-19,324	-18,075	-15,556	-14,584	-18,043	-17,046	-12,537	-5,486	-16,617	-17,451	-16,708	-20,168	-24,842	-24,715	-21,941	-20,852	-19,804	-25,571	-24,292	-23,542	-21,759
Germany.....	-7,499	-7,868	-9,554	-11,933	-14,879	-16,391	-15,968	-18,492	-20,222	-21,283	-21,995	-19,663	-15,773	-5,980	-6,329	-7,972	-9,794	-12,280	-13,465	-13,209	-15,002	-15,774	-16,350	-16,607	-14,048	-10,449
Japan.....	-33,258	-30,093	-31,993	-34,181	-40,380	-44,483	-42,342	-46,578	-44,117	-46,678	-50,625	-57,876	-52,897	-18,818	-17,718	-21,475	-23,597	-28,441	-31,351	-30,542	-34,584	-31,731	-31,743	-34,603	-43,019	-43,082
Korea.....	-1,653	-1,735	-1,871	-2,122	-3,402	-5,511	-7,084	-7,763	-9,099	-11,385	-10,737	-11,598	-10,282	-1,585	-1,698	-1,821	-1,692	-2,863	-4,809	-6,311	-6,713	-7,857	-9,992	-8,654	-8,522	-7,873
Mexico.....	-11,746	-15,061	-14,419	-16,566	-21,755	-24,038	-24,192	-25,567	-25,879	-25,994	-26,672	-31,865	-30,748	-5,506	-7,038	-7,169	-7,760	-8,078	-12,999	-11,059	-10,395	-9,328	-8,068	-7,452	-10,717	-9,808
Saudia Arabia.....	887	1,240	1,147	1,190	745	862	1,065	1,104	864	1,270	2,371	2,530	2,513	473	608	509	533	375	304	615	839	640	1,018	2,130	2,208	2,133
Sweden.....	-1,753	-1,999	-1,952	-2,124	-2,184	-2,300	-2,291	-2,184	-2,939	-2,568	-2,551	-2,329	-2,320	-1,721	-1,884	-1,777	-1,939	-2,042	-2,130	-2,148	-2,091	-2,844	-2,321	-2,141	-1,883	-2,225
Taiwan.....	292	-142	-327	-715	-982	-950	-1,101	-1,332	-1,327	-1,581	-1,767	-1,900	-2,028	951	588	415	165	101	121	5	-57	-29	-43	-41	-52	-35
United Kingdom.....	-1,287	-1,448	-1,659	-1,822	-2,090	-2,784	-2,231	-3,711	-4,466	-4,516	-5,807	-4,805	-2,943	-1,155	-1,252	-1,359	-1,285	-1,825	-2,465	-2,174	-3,387	-4,128	-3,975	-4,857	-3,956	-2,658
Other.....	2,589	2,849	2,853	1,233	-2,091	-2,537	-2,260	-3,764	-4,557	-4,166	-1,977	-2,393	1,039	2,766	2,404	2,009	1,716	561	36	199	492	337	1,809	5,177	5,489	8,811

Net Exports (\$Millions)	Trucks													Parts												
	1995	1996	1997	1998	1999	2000	2001	2002	2003	2004	2005	2006	2007	1995	1996	1997	1998	1999	2000	2001	2002	2003	2004	2005	2006	2007
TOTAL	-\$5,083	-\$4,639	-\$4,993	-\$4,367	-\$10,957	-\$8,861	-\$11,295	-\$10,704	-\$9,281	-\$8,521	-\$8,051	-\$7,662	-\$3,721	-\$10,913	-\$11,188	-\$7,430	-\$10,758	-\$15,457	-\$16,301	-\$15,449	-\$20,611	-\$26,307	-\$30,936	-\$37,246	-\$36,324	-\$27,386
Australia.....	119	201	234	199	120	128	117	167	249	459	533	774	694	605	618	453	392	279	474	423	431	454	524	522	605	669
Austria.....	1	4	10	5	2	4	1	1	0	5	5	7	2	710	641	459	822	933	804	905	715	265	244	444	537	88
Belgium.....	-61	-13	384	187	133	-29	-92	-22	-64	-69	-62	-96	-52	449	424	431	404	250	279	259	297	279	244	160	212	261
Brazil.....	70	53	55	47	1	4	56	3	22	-26	-2	-22	-70	-587	-560	-705	-551	-983	-847	-502	-813	-988	-1,133	-1,432	-1,611	-718
Canada.....	-4,242	-3,908	-4,471	-3,097	-6,293	-5,464	-5,562	-4,539	-3,140	-2,104	-2,256	-282	2,037	9,794	8,652	9,859	9,855	11,672	10,855	9,429	9,836	8,359	9,632	9,501	11,287	14,236
Germany.....	127	194	136	25	-25	-6	-56	-25	-4	-49	-104	-125	-86	-1,645	-1,733	-1,719	-2,165	-2,574	-2,921	-2,702	-3,465	-4,443	-4,884	-5,283	-5,489	-5,238
Japan.....	-1,012	-543	-582	-582	-610	-349	-396	-495	-465	-730	-742	-906	-607	-13,429	-11,832	-9,936	-10,001	-11,329	-12,782	-11,405	-11,499	-11,921	-14,205	-15,280	-13,952	-9,207
Korea.....	24	48	31	4	-38	-22	6	16	12	13	16	20	60	-92	-85	-80	-434	-501	-679	-779	-1,067	-1,255	-1,406	-2,099	-3,098	-2,469
Mexico.....	-1,859	-2,839	-2,866	-2,856	-5,179	-4,316	-6,362	-6,580	-6,859	-7,013	-6,555	-8,545	-8,643	-4,382	-5,184	-4,384	-5,951	-8,499	-6,723	-6,771	-8,593	-9,691	-10,912	-12,665	-12,602	-12,296
Saudia Arabia.....	245	428	384	431	199	385	289	116	77	92	85	115	132	170	204	254	226	172	174	161	149	147	160	156	207	248
Sweden.....	26	3	-2	-55	-14	-13	-18	-10	-56	-146	-184	-179	-108	-59	-118	-173	-130	-129	-157	-126	-82	-39	-101	-226	-267	13
Taiwan.....	32	31	54	27	17	-12	-4	6	2	9	25	3	4	-691	-761	-795	-907	-1,100	-1,058	-1,101	-1,281	-1,300	-1,547	-1,751	-1,852	-1,997
United Kingdom.....	-71	-92	-110	-160	-169	-190	-173	-156	-212	-352	-518	-573	-281	-62	-104	-190	-376	-96	-128	116	-169	-125	-188	-432	-276	-3
Other.....	1,519	1,794	1,750	1,458	900	1,020	900	814	1,156	1,389	1,708	2,145	3,197	-1,696	-1,349	-904	-1,941	-3,551	-3,593	-3,359	-5,070	-6,050	-7,364	-8,861	-10,027	-10,970

Mexico Now Exports 50% More Autos to the US Than the US Exports To the World

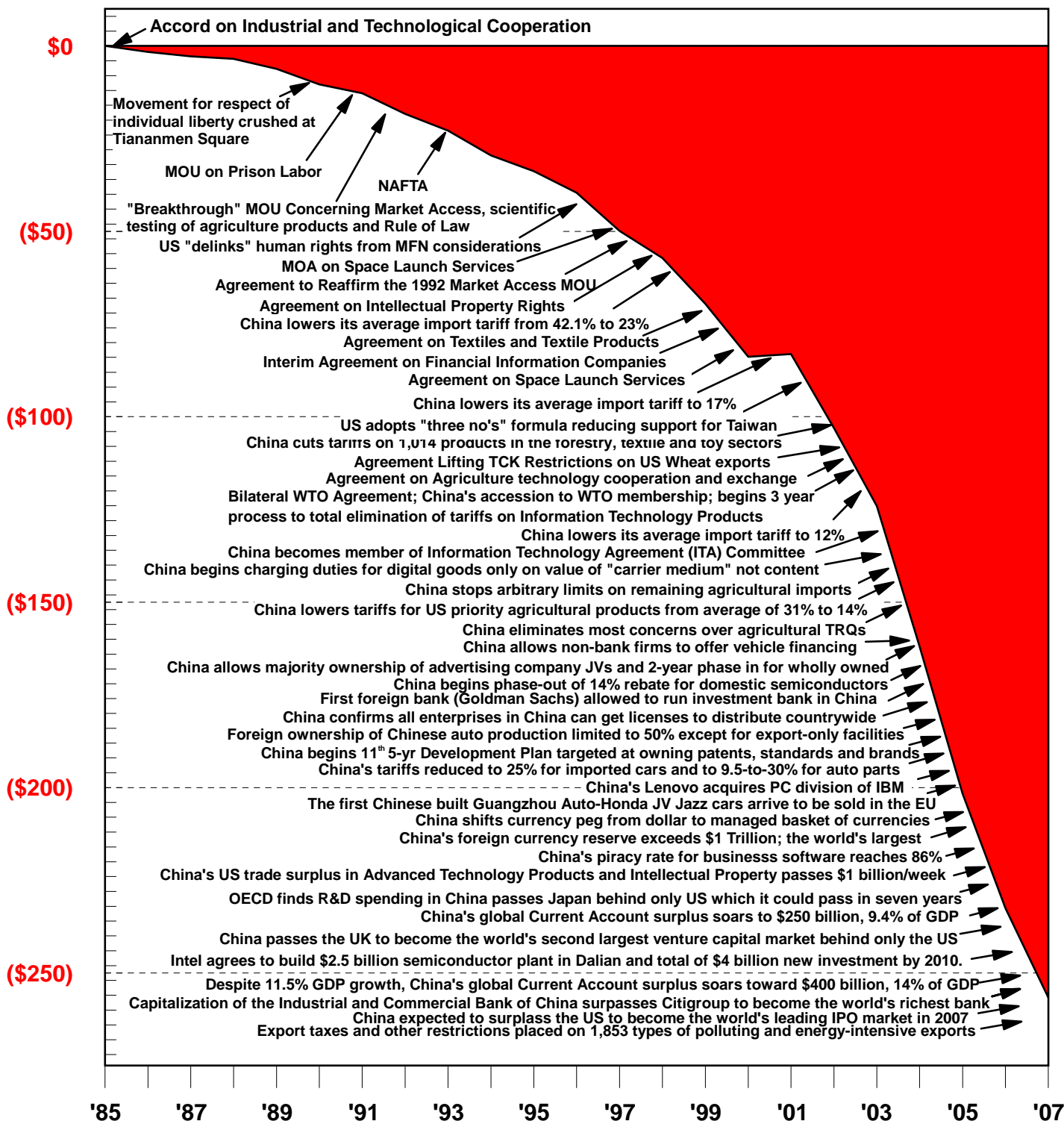
1,000 of vehicles each year



"The fears skillfully articulated in Perot's sound bites and by other NAFTA opponents basically amount to a restatement of the pauper labor argument... The reason why the pauper labor argument misstates the connection between trade and wages is simple. On average, high U.S. labor productivity pays for high US wages."
Gary Clyde Hufbauer and Jeffrey J. Schott NAFTA: An Assessment pp. 11 & 13. Institute for International Economics October, 1993

US Trade Balance With China

\$ Billions Per Year: US Merchandise Net Exports



The Cost in Jobs of China Trade Deficits: 2000-'07

Worsening Trade Losses Just Since 2000 Cost 1 Million Jobs

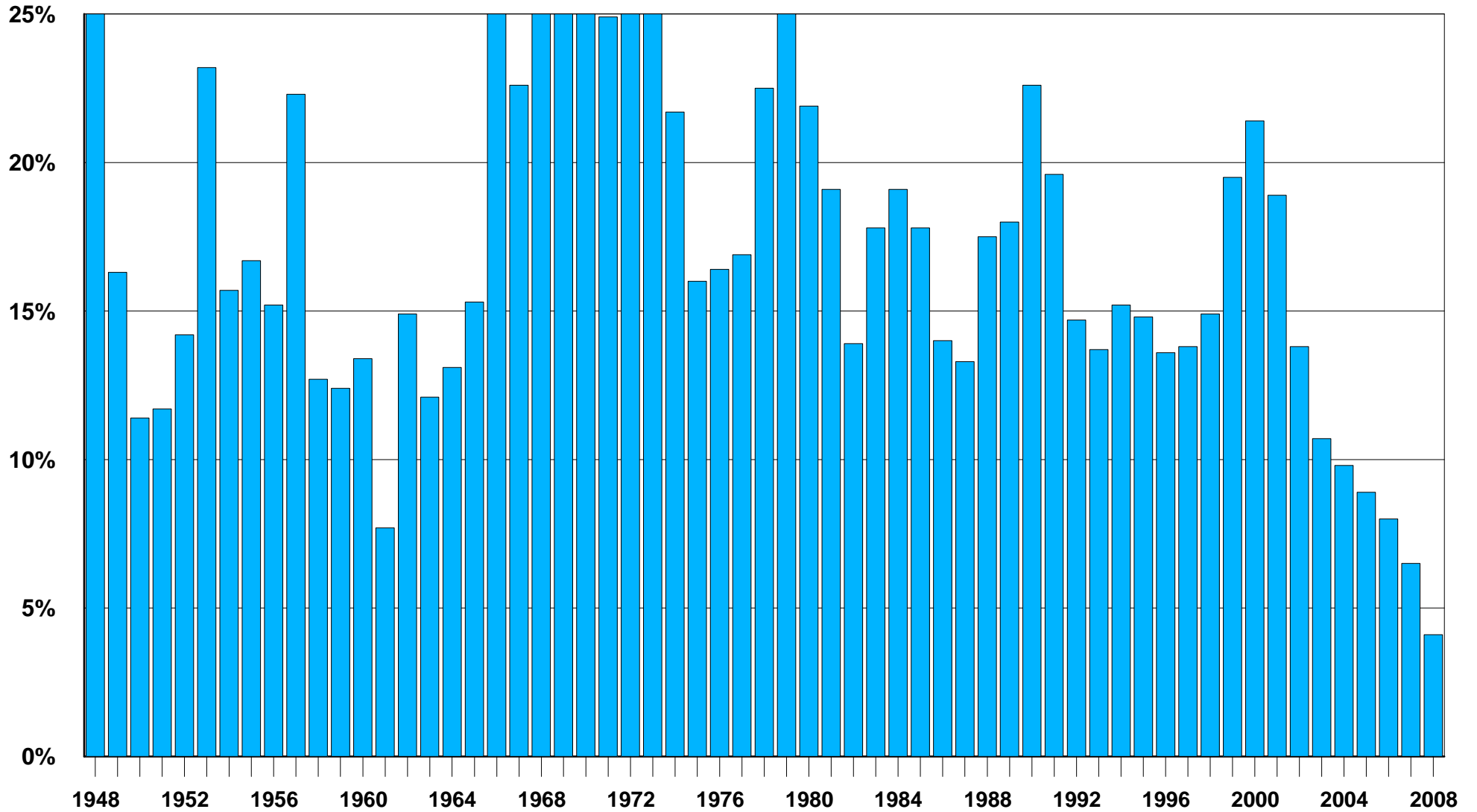
Adjusted for productivity and population changes	Goods Balance: China		Jobs Lost to China Deficit		Jobs Effect
	2000	2007	2000	2007	2000-'07
	\$ Billions		Number of Jobs		Change
United States.....	-\$83,971	-\$256,269	-945,983	-1,961,242	-1,015,259
California.....	-10,118	-31,057	-113,990	-237,681	-123,692
Texas.....	-6,234	-20,310	-70,226	-155,434	-85,209
Florida.....	-4,776	-15,507	-53,801	-118,676	-64,875
New York.....	-5,653	-16,396	-63,681	-125,480	-61,799
Georgia.....	-2,449	-8,110	-27,592	-62,063	-34,471
North Carolina.....	-2,404	-7,699	-27,085	-58,918	-31,833
Illinois.....	-3,701	-10,920	-41,699	-83,572	-41,872
Arizona.....	-1,538	-5,386	-17,322	-41,217	-23,895
Pennsylvania.....	-3,656	-10,563	-41,184	-80,842	-39,658
Ohio.....	-3,382	-9,743	-38,095	-74,562	-36,466
Virginia.....	-2,114	-6,552	-23,818	-50,147	-26,329
Michigan.....	-2,962	-8,557	-33,373	-65,490	-32,117
New Jersey.....	-2,509	-7,380	-28,266	-56,479	-28,213
Washington.....	-1,759	-5,496	-19,817	-42,060	-22,243
Tennessee.....	-1,697	-5,231	-19,119	-40,033	-20,914
Colorado.....	-1,288	-4,131	-14,509	-31,611	-17,102
Indiana.....	-1,813	-5,391	-20,421	-41,259	-20,838
Missouri.....	-1,668	-4,995	-18,793	-38,223	-19,430
Maryland.....	-1,580	-4,774	-17,803	-36,532	-18,729
Wisconsin.....	-1,599	-4,759	-18,016	-36,424	-18,407
South Carolina.....	-1,197	-3,745	-13,488	-28,660	-15,172
Minnesota.....	-1,468	-4,416	-16,541	-33,797	-17,256
Massachusetts.....	-1,893	-5,480	-21,331	-41,938	-20,608
Nevada.....	-601	-2,180	-6,766	-16,681	-9,914
Oregon.....	-1,021	-3,184	-11,502	-24,367	-12,865
Alabama.....	-1,325	-3,932	-14,924	-30,092	-15,168
Kentucky.....	-1,205	-3,604	-13,573	-27,579	-14,006
Utah.....	-668	-2,248	-7,524	-17,201	-9,677
Oklahoma.....	-1,028	-3,073	-11,579	-23,521	-11,942
Connecticut.....	-1,015	-2,976	-11,438	-22,773	-11,335
Arkansas.....	-797	-2,409	-8,979	-18,433	-9,454
Mississippi.....	-848	-2,480	-9,549	-18,979	-9,430
Iowa.....	-871	-2,539	-9,816	-19,429	-9,613
Kansas.....	-801	-2,359	-9,027	-18,050	-9,023
Louisiana.....	-1,330	-3,648	-14,981	-27,916	-12,935
New Mexico.....	-542	-1,674	-6,104	-12,809	-6,705
Idaho.....	-387	-1,274	-4,356	-9,750	-5,393
Nebraska.....	-510	-1,508	-5,743	-11,539	-5,795
New Hampshire.....	-369	-1,118	-4,158	-8,556	-4,398
West Virginia.....	-538	-1,540	-6,058	-11,782	-5,725
Hawaii.....	-361	-1,090	-4,062	-8,345	-4,283
Maine.....	-380	-1,119	-4,282	-8,565	-4,283
Delaware.....	-234	-735	-2,636	-5,623	-2,987
Montana.....	-269	-814	-3,028	-6,228	-3,200
Rhode Island.....	-313	-899	-3,523	-6,878	-3,356
South Dakota.....	-225	-676	-2,533	-5,177	-2,644
Alaska.....	-187	-581	-2,103	-4,444	-2,341
Wyoming.....	-147	-444	-1,656	-3,400	-1,744
District of Columbia.....	-170	-500	-1,917	-3,825	-1,908
Vermont.....	-181	-528	-2,045	-4,040	-1,995
North Dakota.....	-191	-544	-2,150	-4,160	-2,010

State trade balances are allocated as share of national population each year.

US Dept. of Commerce, Bureau of the Census and MBG Information Services

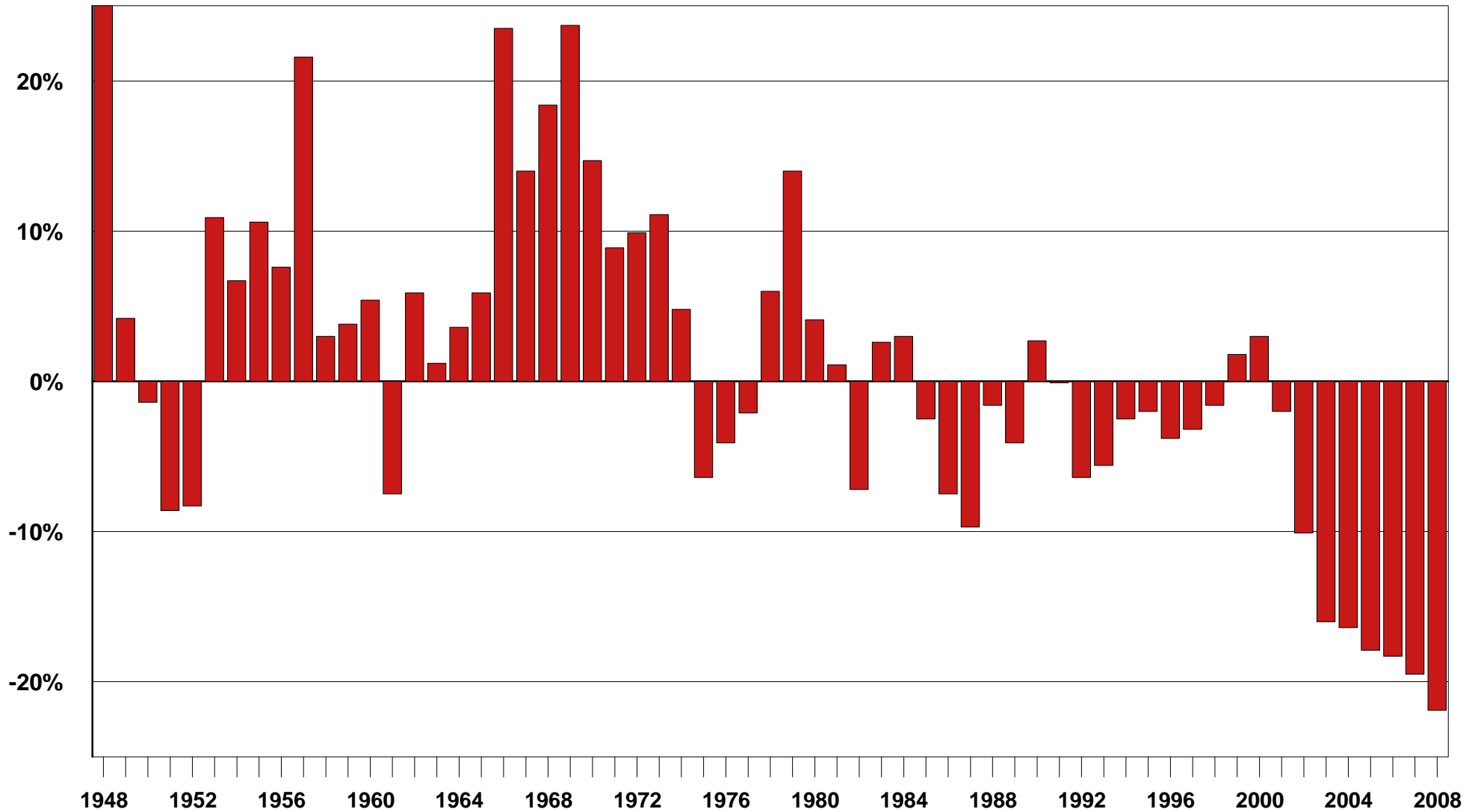
Slowest 8-Year US Job Growth Since the Depression

% US Job Growth in Eight Years Ending July Each Year



8-Year Loss of US Manufacturing Jobs; Worst on Record

% US Manufacturing Job Growth or Loss in Eight Years Ending July Each Year



© CW McMillion/MBG Information Services

The Recent Jobs Record in the States

Rank	(States: 1,000 of jobs)	----- July of Each Year -----			Change: 2008/2007		Change: 2008/2000	
		2000	2007	2008	-1,000	(PERCENT)	-1,000	(PERCENT)
1	Michigan.....	4,641.2	4,204.4	4,151.3	-53.1	-1.3%	-489.9	-10.6%
2	Ohio.....	5,624.0	5,421.3	5,409.9	-11.4	-0.2%	-214.1	-3.8%
3	Indiana.....	2,971.9	2,955.8	2,937.7	-18.1	-0.6%	-34.2	-1.2%
4	Massachusetts.....	3,334.5	3,290.3	3,299.7	9.4	0.3%	-34.8	-1.0%
5	Illinois.....	6,061.6	6,011.5	6,012.3	0.8	0.0%	-49.3	-0.8%
6	Mississippi.....	1,147.2	1,136.4	1,140.3	3.9	0.3%	-6.9	-0.6%
7	Connecticut.....	1,695.5	1,691.3	1,695.9	4.6	0.3%	0.4	0.0%
8	Rhode Island.....	474.1	493.1	479.1	-14.0	-2.8%	5.0	1.1%
9	Wisconsin.....	2,852.5	2,901.0	2,889.0	-12.0	-0.4%	36.5	1.3%
10	Missouri.....	2,729.8	2,771.7	2,769.1	-2.6	-0.1%	39.3	1.4%
11	New York.....	8,648.0	8,756.5	8,778.9	22.4	0.3%	130.9	1.5%
12	Pennsylvania.....	5,688.3	5,786.4	5,784.5	-1.9	-0.0%	96.2	1.7%
13	New Jersey.....	4,020.0	4,098.7	4,088.7	-10.0	-0.2%	68.7	1.7%
14	Louisiana.....	1,904.4	1,904.9	1,937.6	32.7	1.7%	33.2	1.7%
15	Maine.....	615.8	628.8	627.1	-1.7	-0.3%	11.3	1.8%
16	Tennessee.....	2,719.4	2,787.1	2,773.8	-13.3	-0.5%	54.4	2.0%
17	West Virginia.....	742.1	754.2	759.5	5.3	0.7%	17.4	2.3%
18	Iowa.....	1,474.0	1,507.6	1,512.8	5.2	0.3%	38.8	2.6%
19	Vermont.....	293.6	302.6	302.1	-0.5	-0.2%	8.5	2.9%
20	Kentucky.....	1,821.5	1,860.8	1,876.8	16.0	0.9%	55.3	3.0%
21	Kansas.....	1,333.8	1,369.6	1,374.8	5.2	0.4%	41.0	3.1%
22	Delaware.....	425.8	440.2	440.4	0.2	0.0%	14.6	3.4%
23	Minnesota.....	2,690.8	2,784.6	2,783.6	-1.0	-0.0%	92.8	3.4%
24	Arkansas.....	1,148.2	1,187.5	1,194.9	7.4	0.6%	46.7	4.1%
	US Total.....	131,776	137,410	137,236	-174	-0.1%	5,460	4.1%
25	Georgia.....	3,944.4	4,115.9	4,108.9	-7.0	-0.2%	164.5	4.2%
26	California.....	14,450.0	15,129.4	15,056.7	-72.7	-0.5%	606.7	4.2%
27	Alabama.....	1,922.4	1,996.3	2,008.2	11.9	0.6%	85.8	4.5%
28	New Hampshire.....	625.1	652.8	660.2	7.4	1.1%	35.1	5.6%
29	South Carolina.....	1,834.5	1,937.7	1,941.6	3.9	0.2%	107.1	5.8%
30	Nebraska.....	914.8	964.0	973.1	9.1	0.9%	58.3	6.4%
31	North Carolina.....	3,882.7	4,081.5	4,130.4	48.9	1.2%	247.7	6.4%
32	Colorado.....	2,227.4	2,342.2	2,373.6	31.4	1.3%	146.2	6.6%
33	Oklahoma.....	1,471.0	1,550.8	1,567.6	16.8	1.1%	96.6	6.6%
34	Oregon.....	1,614.6	1,728.1	1,725.3	-2.8	-0.2%	110.7	6.9%
35	Maryland.....	2,472.4	2,623.1	2,648.5	25.4	1.0%	176.1	7.1%
36	Virginia.....	3,517.3	3,758.0	3,773.8	15.8	0.4%	256.5	7.3%
	District of Columbia.....	661.5	701.9	717.6	15.7	2.2%	56.1	8.5%
37	North Dakota.....	327.6	352.9	356.8	3.9	1.1%	29.2	8.9%
38	South Dakota.....	381.8	413.2	418.5	5.3	1.3%	36.7	9.6%
39	Washington.....	2,709.3	2,944.1	2,971.1	27.0	0.9%	261.8	9.7%
40	Alaska.....	305.4	339.5	342.3	2.8	0.8%	36.9	12.1%
41	Florida.....	6,963.8	7,885.1	7,807.3	-77.8	-1.0%	843.5	12.1%
42	Texas.....	9,388.1	10,311.9	10,562.8	250.9	2.4%	1174.7	12.5%
43	Hawaii.....	547.6	615.7	616.4	0.7	0.1%	68.8	12.6%
44	New Mexico.....	742.3	838.8	846.7	7.9	0.9%	104.4	14.1%
45	Montana.....	395.7	454.7	457.5	2.8	0.6%	61.8	15.6%
46	Idaho.....	564.6	662.5	657.5	-5.0	-0.8%	92.9	16.5%
47	Utah.....	1,067.3	1,243.3	1,250.4	7.1	0.6%	183.1	17.2%
48	Arizona.....	2,192.9	2,612.3	2,570.6	-41.7	-1.6%	377.7	17.2%
49	Wyoming.....	246.4	294.9	302.3	7.4	2.5%	55.9	22.7%
50	Nevada.....	1,024.8	1,286.7	1,276.7	-10.0	-0.8%	251.9	24.6%

© CW McMillion/MBG Information Services

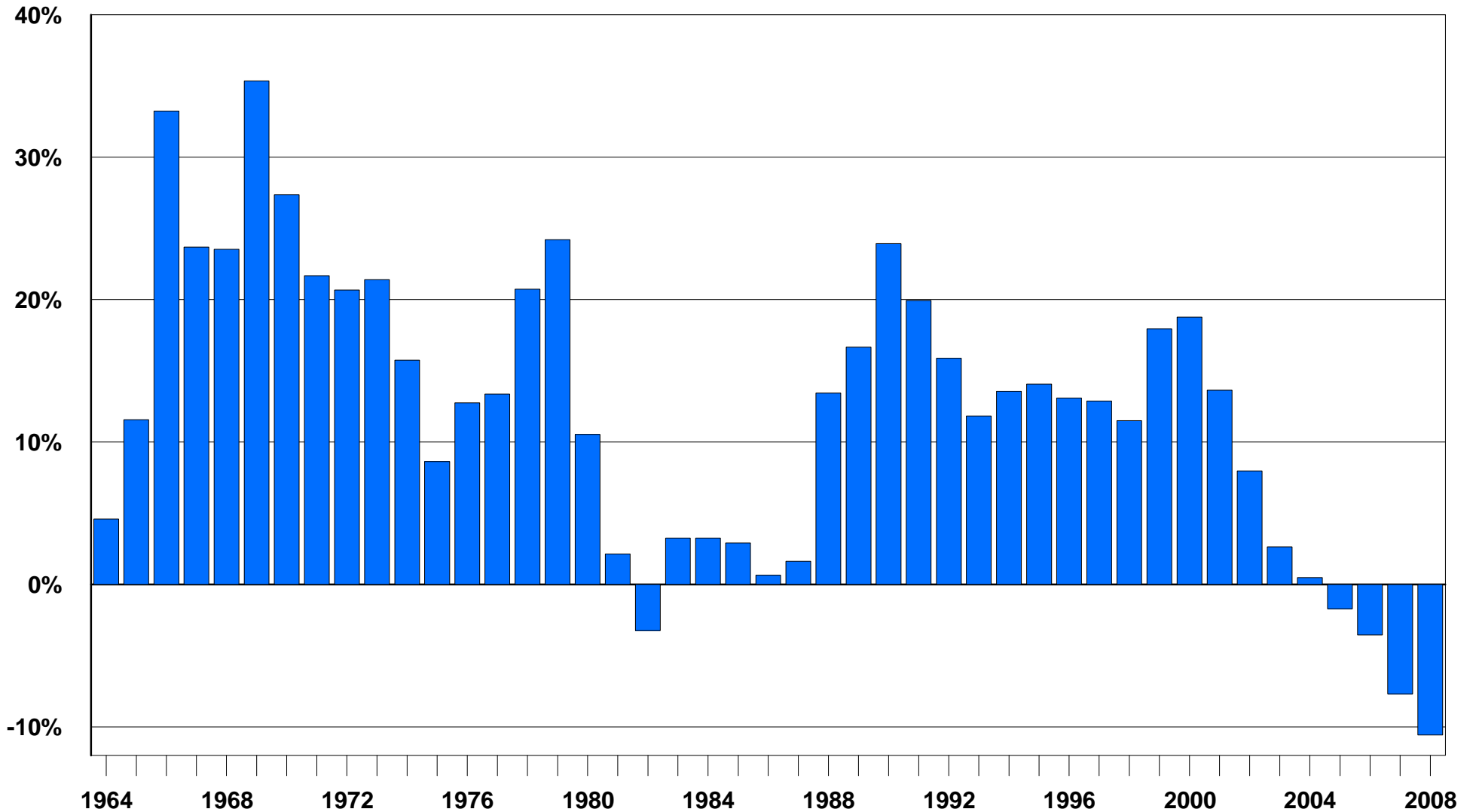
State Manufacturing Jobs Losses/Gains

Rank	(States: 1,000 of jobs)	----- July of Each Year -----			Change: 2008/2007		Change: 2008/2000	
		2000	2007	2008	-1,000	(PERCENT)	-1,000	(PERCENT)
	District of Columbia.....	3.7	1.7	1.6	-0.1	-5.9%	-2.1	-56.8%
1	Michigan.....	887.3	594.9	572.1	-22.8	-3.8%	-315.2	-35.5%
2	Rhode Island.....	67.3	49.1	45.7	-3.4	-6.9%	-21.6	-32.1%
3	North Carolina.....	759.8	536.3	520.3	-16.0	-3.0%	-239.5	-31.5%
4	New York.....	745.5	554.0	535.7	-18.3	-3.3%	-209.8	-28.1%
5	New Jersey.....	418.8	313.0	302.1	-10.9	-3.5%	-116.7	-27.9%
6	Massachusetts.....	401.3	294.3	289.8	-4.5	-1.5%	-111.5	-27.8%
7	South Carolina.....	335.8	250.8	243.9	-6.9	-2.8%	-91.9	-27.4%
8	Mississippi.....	221.5	168.4	162.6	-5.8	-3.4%	-58.9	-26.6%
9	Maryland.....	173.3	132.5	128.1	-4.4	-3.3%	-45.2	-26.1%
10	Maine.....	79.9	59.9	59.1	-0.8	-1.3%	-20.8	-26.0%
11	Pennsylvania.....	869.7	662.1	645.8	-16.3	-2.5%	-223.9	-25.7%
12	Tennessee.....	493.8	377.2	368.1	-9.1	-2.4%	-125.7	-25.5%
13	Ohio.....	1,013.0	764.9	758.8	-6.1	-0.8%	-254.2	-25.1%
14	West Virginia.....	76.1	59.4	57.5	-1.9	-3.2%	-18.6	-24.4%
15	Arkansas.....	241.5	189.2	182.8	-6.4	-3.4%	-58.7	-24.3%
16	Colorado.....	189.6	147.2	144.3	-2.9	-2.0%	-45.3	-23.9%
17	New Hampshire.....	101.5	77.9	77.4	-0.5	-0.6%	-24.1	-23.7%
18	Virginia.....	359.4	279.1	274.8	-4.3	-1.5%	-84.6	-23.5%
19	Georgia.....	536.8	431.0	411.1	-19.9	-4.6%	-125.7	-23.4%
20	Illinois.....	872.6	676.1	670.1	-6.0	-0.9%	-202.5	-23.2%
21	Vermont.....	46.4	36.2	35.7	-0.5	-1.4%	-10.7	-23.1%
22	California.....	1,868.7	1,475.9	1,447.3	-28.6	-1.9%	-421.4	-22.6%
23	Delaware.....	41.4	32.7	32.3	-0.4	-1.2%	-9.1	-22.0%
24	Florida.....	466.8	385.4	364.7	-20.7	-5.4%	-102.1	-21.9%
	US Totals.....	17,318	13,926	13,532	-394	-2.8%	-3,786	-21.9%
25	Indiana.....	665.7	551.3	523.3	-28.0	-5.1%	-142.4	-21.4%
26	Missouri.....	360.8	294.6	285.8	-8.8	-3.0%	-75.0	-20.8%
27	Kentucky.....	309.4	251.8	247.8	-4.0	-1.6%	-61.6	-19.9%
28	Connecticut.....	235.1	191.4	188.9	-2.5	-1.3%	-46.2	-19.7%
29	Alabama.....	350.9	297.3	289.6	-7.7	-2.6%	-61.3	-17.5%
30	Wisconsin.....	600.0	508.4	497.4	-11.0	-2.2%	-102.6	-17.1%
31	New Mexico.....	42.1	37.3	35.2	-2.1	-5.6%	-6.9	-16.4%
32	Minnesota.....	401.6	346.1	338.3	-7.8	-2.3%	-63.3	-15.8%
33	Arizona.....	210.7	181.6	177.9	-3.7	-2.0%	-32.8	-15.6%
34	Oklahoma.....	177.7	151.4	151.0	-0.4	-0.3%	-26.7	-15.0%
35	Oregon.....	230.3	206.7	197.9	-8.8	-4.3%	-32.4	-14.1%
36	Texas.....	1,070.3	937.8	928.1	-9.7	-1.0%	-142.2	-13.3%
37	Nebraska.....	114.4	101.8	101.1	-0.7	-0.7%	-13.3	-11.6%
38	Louisiana.....	177.0	158.6	157.1	-1.5	-0.9%	-19.9	-11.2%
39	Idaho.....	70.8	67.4	63.3	-4.1	-6.1%	-7.5	-10.6%
40	Washington.....	334.8	297.5	301.6	4.1	1.4%	-33.2	-9.9%
41	Iowa.....	254.7	231.6	230.4	-1.2	-0.5%	-24.3	-9.5%
42	Hawaii.....	16.5	15.1	15.0	-0.1	-0.7%	-1.5	-9.1%
43	Montana.....	22.7	20.6	20.7	0.1	0.5%	-2.0	-8.8%
44	Wyoming.....	10.6	10.1	9.8	-0.3	-3.0%	-0.8	-7.5%
45	Kansas.....	200.7	186.6	186.7	0.1	0.1%	-14.0	-7.0%
46	South Dakota.....	44.4	42.1	43.7	1.6	3.8%	-0.7	-1.6%
47	Utah.....	125.6	128.4	128.5	0.1	0.1%	2.9	2.3%
48	Alaska.....	20.3	22.2	21.5	-0.7	-3.2%	1.2	5.9%
49	North Dakota.....	24.3	26.6	26.2	-0.4	-1.5%	1.9	7.8%
50	Nevada.....	42.9	50.8	50.7	-0.1	-0.2%	7.8	18.2%

Michigan's Job Gains and Losses:

Recent Sustained Job Losses are -- by far -- the Worst on Record

% Eight-Year Job Gain or Loss Ending July of Each Year



Michigan's Job and Compensation Losses; Trading Away High Wage Jobs

Code	Line Titles	Jobs in Michigan		Compensation Per Job		Compensation vs Mfging		Job Changes: 2001-2006	
		2001	2006	2001	2006	2001	2006	Jobs	Percent
1	Wage and salary employment by place of work.....	4,709,546	4,455,403	\$44,650	\$51,964	-30.3%	-33.4%	-254,143	-5.4%
81	Farm wage and salary employment.....	18,977	16,857	33,564	30,852	-47.6%	-60.5%	-2,120	-11.2%
82	Nonfarm wage and salary employment.....	4,690,569	4,438,546	44,695	52,045	-30.2%	-33.3%	-252,023	-5.4%
90	Private wage and salary.....	3,991,073	3,762,465	44,831	51,137	-30.0%	-34.5%	-228,608	-5.7%
100	Forestry, fishing, related activities.....	10,564	8,755	20,339	24,555	-68.2%	-68.5%	-1,809	-17.1%
101	Forestry and logging.....	2,248	1,934	29,260	35,388	-54.3%	-54.6%	-314	-14.0%
102	Fishing, hunting, and trapping.....	370	249	25,351	25,952	-60.4%	-66.7%	-121	-32.7%
103	Agriculture and forestry support.....	7,946	6,572	17,582	21,315	-72.5%	-72.7%	-1,374	-17.3%
200	Mining.....	7,637	6,557	54,844	71,397	-14.3%	-8.5%	-1,080	-14.1%
201	Oil and gas extraction.....	558	544	59,407	84,057	-7.2%	7.7%	-14	-2.5%
202	Mining (except oil and gas).....	5,476	4,249	55,919	74,621	-12.7%	-4.4%	-1,227	-22.4%
203	Support activities for mining.....	1,603	1,764	49,583	59,726	-22.5%	-23.4%	161	10.0%
300	Utilities.....	21,254	20,736	82,401	112,211	28.7%	43.8%	-518	-2.4%
400	Construction.....	213,954	182,147	51,488	56,349	-19.6%	-27.8%	-31,807	-14.9%
401	Construction of buildings.....	49,293	42,975	50,867	56,864	-20.5%	-27.1%	-6,318	-12.8%
402	Heavy and civil engineering construction.....	21,677	18,470	60,591	70,419	-5.4%	-9.7%	-3,207	-14.8%
403	Specialty trade contractors.....	142,984	120,702	50,322	54,013	-21.4%	-30.8%	-22,282	-15.6%
500	Manufacturing.....	828,809	654,825	64,019	78,020	0.0%	0.0%	-173,984	-21.0%
510	Durable goods manufacturing.....	660,411	507,067	67,277	81,707	5.1%	4.7%	-153,344	-23.2%
511	Wood product manufacturing.....	12,679	11,168	38,862	43,164	-39.3%	-44.7%	-1,511	-11.9%
512	Nonmetallic mineral product manufacturing.....	19,498	14,908	57,997	69,357	-9.4%	-11.1%	-4,590	-23.5%
513	Primary metal manufacturing.....	31,594	26,028	61,312	75,595	-4.2%	-3.1%	-5,566	-17.6%
514	Fabricated metal product manufacturing.....	89,218	83,934	49,080	56,233	-23.3%	-27.9%	-5,284	-5.9%
515	Machinery manufacturing.....	90,089	74,610	60,731	72,986	-5.1%	-6.5%	-15,479	-17.2%
516	Computer/electronic product manufacturing.....	23,716	21,125	55,158	68,400	-13.8%	-12.3%	-2,591	-10.9%
517	Electrical equipment/appliance manufacturing.....	16,037	10,698	57,841	93,310	-9.7%	19.6%	-5,339	-33.3%
518	Motor vehicles, bodies/trailers/parts mfging.....	307,150	214,923	81,765	102,762	27.7%	31.7%	-92,227	-30.0%
519	Other transportation equipment manufacturing.....	10,021	5,781	63,128	72,533	-1.4%	-7.0%	-4,240	-42.3%
521	Furniture and related product manufacturing.....	37,159	25,287	50,075	60,960	-21.8%	-21.9%	-11,872	-31.9%
522	Miscellaneous manufacturing.....	23,250	18,605	50,615	69,450	-20.9%	-11.0%	-4,645	-20.0%
530	Nondurable goods manufacturing.....	168,398	147,758	51,240	65,368	-20.0%	-16.2%	-20,640	-12.3%
531	Food manufacturing.....	35,681	33,476	43,509	54,979	-32.0%	-29.5%	-2,205	-6.2%
532	Beverage and tobacco product manufacturing.....	4,854	4,520	52,209	67,853	-18.4%	-13.0%	-334	-6.9%
533	Textile mills.....	830	751	42,417	46,623	-33.7%	-40.2%	-79	-9.5%
534	Textile product mills.....	2,662	2,557	41,696	44,814	-34.9%	-42.6%	-105	-3.9%
535	Apparel manufacturing.....	1,418	820	25,158	49,970	-60.7%	-36.0%	-598	-42.2%
536	Leather and allied product manufacturing.....	3,412	1,360	46,057	58,828	-28.1%	-24.6%	-2,052	-60.1%
537	Paper manufacturing.....	17,349	14,023	56,449	65,321	-11.8%	-16.3%	-3,326	-19.2%
538	Printing and related support activities.....	22,475	17,944	44,664	51,303	-30.2%	-34.2%	-4,531	-20.2%
539	Petroleum and coal products manufacturing.....	1,683	1,340	74,129	120,522	15.8%	54.5%	-343	-20.4%
541	Chemical manufacturing.....	31,947	28,982	73,834	103,515	15.3%	32.7%	-2,965	-9.3%
542	Plastics and rubber products manufacturing.....	46,087	41,985	43,767	53,419	-31.6%	-31.5%	-4,102	-8.9%
600	Wholesale trade.....	183,432	171,927	59,992	70,063	-6.3%	-10.2%	-11,505	-6.3%
700	Retail trade.....	565,408	510,946	25,036	28,414	-60.9%	-63.6%	-54,462	-9.6%
701	Motor vehicle and parts dealers.....	63,909	60,904	47,245	47,345	-26.2%	-39.3%	-3,005	-4.7%
702	Furniture and home furnishings stores.....	20,140	18,184	31,026	32,204	-51.5%	-58.7%	-1,956	-9.7%
703	Electronics and appliance stores.....	19,162	18,372	38,361	39,836	-40.1%	-48.9%	-790	-4.1%
704	Building material and garden supply stores.....	47,152	46,110	31,546	33,524	-50.7%	-57.0%	-1,042	-2.2%
705	Food and beverage stores.....	98,504	85,024	19,509	23,070	-69.5%	-70.4%	-13,480	-13.7%
706	Health and personal care stores.....	35,133	34,703	28,498	37,569	-55.5%	-51.8%	-430	-1.2%
707	Gasoline stations.....	31,236	26,508	17,010	19,537	-73.4%	-75.0%	-4,728	-15.1%
708	Clothing and clothing accessories stores.....	41,468	42,672	17,952	19,036	-72.0%	-75.6%	1,204	2.9%
709	Sporting goods, hobby, book and music stores.....	28,144	24,905	18,570	19,180	-71.0%	-75.4%	-3,239	-11.5%
711	General merchandise stores.....	136,302	115,378	18,108	22,499	-71.7%	-71.2%	-20,924	-15.4%
712	Miscellaneous store retailers.....	33,980	28,688	22,246	24,742	-65.3%	-68.3%	-5,292	-15.6%
713	Nonstore retailers.....	10,278	9,498	33,419	41,327	-47.8%	-47.0%	-780	-7.6%
800	Transportation and warehousing.....	110,814	108,548	50,361	57,002	-21.3%	-26.9%	-2,266	-2.0%
801	Air transportation.....	17,974	14,323	66,532	74,176	3.9%	-4.9%	-3,651	-20.3%
802	Rail transportation.....	4,446	3,823	84,294	94,410	31.7%	21.0%	-623	-14.0%
803	Water transportation.....	610	602	43,013	53,164	-32.8%	-31.9%	-8	-1.3%
804	Truck transportation.....	37,335	39,690	48,740	56,585	-23.9%	-27.5%	2,355	6.3%
805	Transit and ground passenger transportation.....	5,029	5,573	28,932	34,151	-54.8%	-56.2%	544	10.8%
806	Pipeline transportation.....	1,385	1,144	114,386	86,749	78.7%	11.2%	-241	-17.4%
807	Scenic and sightseeing transportation.....	370	393	25,868	29,132	-59.6%	-62.7%	23	6.2%
808	Support activities for transportation.....	14,687	15,395	39,544	45,440	-38.2%	-41.8%	708	4.8%
809	Couriers and messengers.....	13,521	12,448	37,970	49,849	-40.7%	-36.1%	-1,073	-7.9%
811	Warehousing and storage.....	15,457	15,157	48,939	57,081	-23.6%	-26.8%	-300	-1.9%

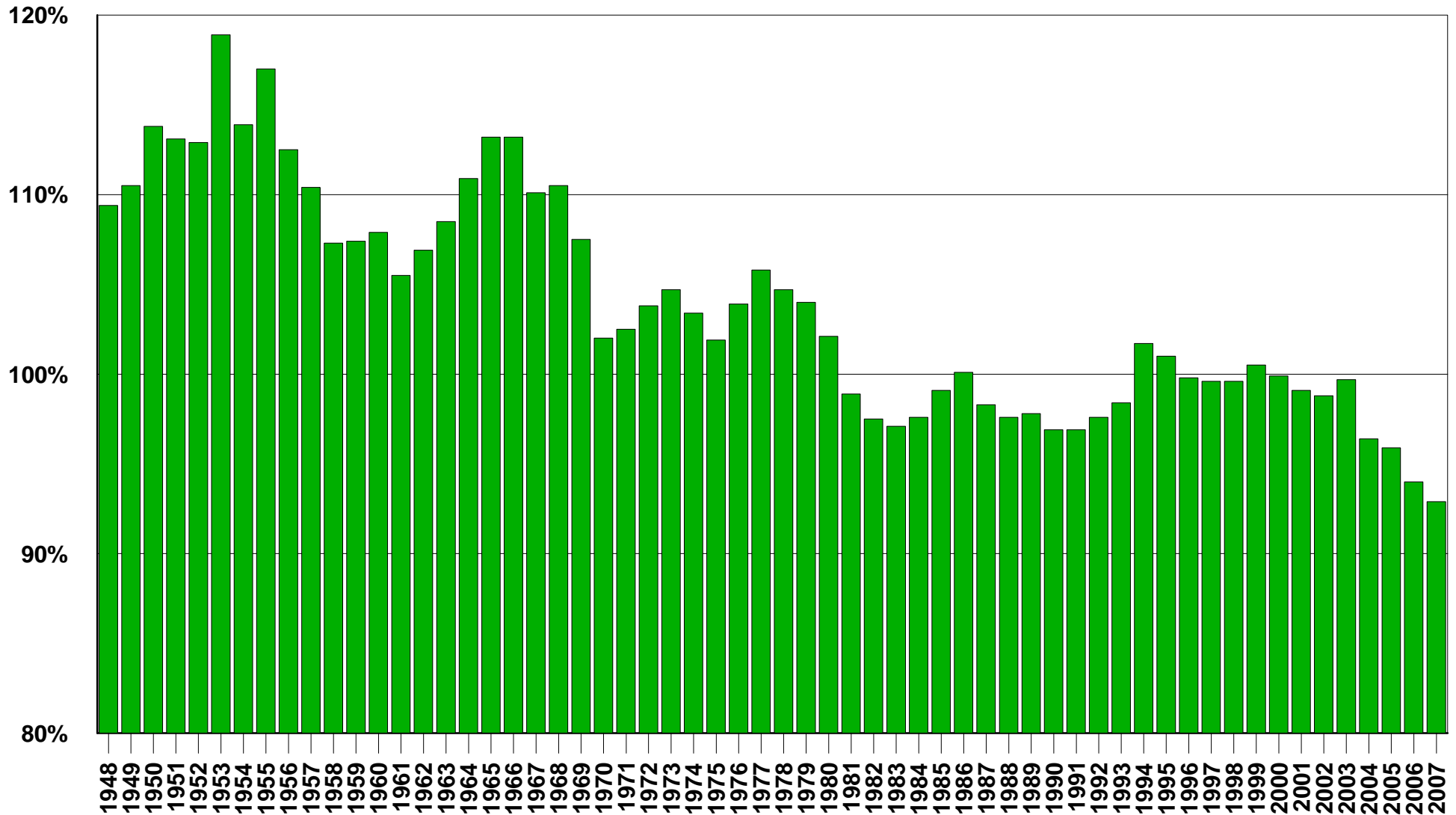
Michigan's Job and Compensation Losses; Trading Away High Wage Jobs

Code	Line Titles	Jobs in Michigan		Compensation Per Job		Compensation vs Mfging		Job Changes: 2001-2006	
		2001	2006	2001	2006	2001	2006	Jobs	Percent
900	Information.....	75,682	65,777	56,099	67,166	-12.4%	-13.9%	-9,905	-13.1%
901	Publishing industries, except Internet.....	27,376	23,925	59,128	71,682	-7.6%	-8.1%	-3,451	-12.6%
902	Motion picture and sound recording industries.....	7,286	6,455	27,505	28,434	-57.0%	-63.6%	-831	-11.4%
903	Broadcasting, except Internet.....	6,707	6,794	59,924	71,512	-6.4%	-8.3%	87	1.3%
904	Internet publishing and broadcasting.....	288	228	54,521	81,022	-14.8%	3.8%	-60	-20.8%
905	Telecommunications.....	27,020	21,754	59,848	72,489	-6.5%	-7.1%	-5,266	-19.5%
906	ISPs, search portals, and data processing.....	6,346	5,667	57,150	70,559	-10.7%	-9.6%	-679	-10.7%
907	Other information services.....	659	954	44,300	40,204	-30.8%	-48.5%	295	44.8%
1000	Finance and insurance.....	155,210	161,635	57,938	68,710	-9.5%	-11.9%	6,425	4.1%
1001	Monetary authorities - central bank.....	403	275	53,787	64,629	-16.0%	-17.2%	-128	-31.8%
1002	Credit intermediation and related activities.....	81,423	86,363	52,623	60,082	-17.8%	-23.0%	4,940	6.1%
1003	Securities, commodity contracts, investments.....	11,111	12,380	107,978	118,516	68.7%	51.9%	1,269	11.4%
1004	Insurance carriers and related activities.....	60,965	60,926	55,246	69,130	-13.7%	-11.4%	-39	-0.1%
1005	Funds, trusts, and other financial vehicles.....	1,308	1,691	90,525	130,300	41.4%	67.0%	383	29.3%
1100	Real estate and rental and leasing.....	57,773	58,014	33,474	36,412	-47.7%	-53.3%	241	0.4%
1101	Real estate.....	39,276	41,033	34,352	36,874	-46.3%	-52.7%	1,757	4.5%
1102	Rental and leasing services.....	17,865	16,069	30,962	33,248	-51.6%	-57.4%	-1,796	-10.1%
1103	Lessors of nonfinancial intangible assets.....	632	912	49,903	71,355	-22.0%	-8.5%	280	44.3%
1200	Professional and technical services.....	282,318	256,664	70,330	79,646	9.9%	2.1%	-25,654	-9.1%
1300	Management of companies and enterprises.....	67,096	62,319	100,086	109,626	56.3%	40.5%	-4,777	-7.1%
1400	Administrative and waste services.....	268,964	279,203	30,257	36,468	-52.7%	-53.3%	10,239	3.8%
1401	Administrative and support services.....	256,915	267,778	29,406	35,624	-54.1%	-54.3%	10,863	4.2%
1402	Waste management and remediation services.....	12,049	11,425	48,406	56,236	-24.4%	-27.9%	-624	-5.2%
1500	Educational services.....	58,144	70,294	25,729	31,255	-59.8%	-59.9%	12,150	20.9%
1600	Health care and social assistance.....	472,382	525,332	38,965	46,117	-39.1%	-40.9%	52,950	11.2%
1601	Ambulatory health care services.....	152,296	176,923	52,282	57,971	-18.3%	-25.7%	24,627	16.2%
1602	Hospitals.....	172,042	186,491	41,053	52,229	-35.9%	-33.1%	14,449	8.4%
1603	Nursing and residential care facilities.....	87,534	91,922	23,807	27,737	-62.8%	-64.4%	4,388	5.0%
1604	Social assistance.....	60,510	69,996	21,436	24,011	-66.5%	-69.2%	9,486	15.7%
1700	Arts, entertainment, and recreation.....	65,282	64,466	26,872	32,459	-58.0%	-58.4%	-816	-1.2%
1701	Performing arts and spectator sports.....	10,892	9,379	51,887	77,701	-19.0%	-0.4%	-1,513	-13.9%
1702	Museums, historical sites, zoos, and parks.....	3,198	3,578	21,447	24,344	-66.5%	-68.8%	380	11.9%
1703	Amusement, gambling, and recreation.....	51,192	51,509	21,888	24,785	-65.8%	-68.2%	317	0.6%
1800	Accommodation and food services.....	336,541	348,278	13,916	15,826	-78.3%	-79.7%	11,737	3.5%
1801	Accommodation.....	35,727	34,545	19,152	22,348	-70.1%	-71.4%	-1,182	-3.3%
1802	Food services and drinking places.....	300,814	313,733	13,295	15,108	-79.2%	-80.6%	12,919	4.3%
1900	Other services, except public administration.....	209,809	206,042	26,216	29,918	-59.0%	-61.7%	-3,767	-1.8%
1901	Repair and maintenance.....	47,530	41,893	35,009	39,743	-45.3%	-49.1%	-5,637	-11.9%
1902	Personal and laundry services.....	45,980	43,486	25,176	25,975	-60.7%	-66.7%	-2,494	-5.4%
1903	Membership associations and organizations.....	89,610	92,143	26,963	33,244	-57.9%	-57.4%	2,533	2.8%
1904	Private households.....	26,689	28,520	9,843	10,752	-84.6%	-86.2%	1,831	6.9%
2000	Government and government enterprises.....	699,496	676,081	43,921	57,098	-31.4%	-26.8%	-23,415	-3.3%
2001	Federal, civilian.....	54,628	54,336	69,634	87,829	8.8%	12.6%	-292	-0.5%
2002	Military.....	22,022	21,052	21,142	41,792	-67.0%	-46.4%	-970	-4.4%
2010	State and local.....	622,846	600,693	42,472	54,854	-33.7%	-29.7%	-22,153	-3.6%
2011	State government.....	173,392	165,254	45,182	57,346	-29.4%	-26.5%	-8,138	-4.7%
2012	Local government.....	449,454	435,439	41,426	53,909	-35.3%	-30.9%	-14,015	-3.1%

Michigan's Average Income vs US Average:

Since 1981 Average Per-Capita After-tax Income Is Now Far Below US Average

% of Average US Per-Capita Disposable Income In Michigan



The Recent Jobs Record in Michigan

Code	Industry: Non-farm jobs: (1,000)	June of Each Year			Change: 2008/2000*	
		2000	2001	2008	Thousands	Percent
1	Total Nonfarm	4,745.6	4,641.2	4,275.0	-470.6	-9.9%
50000001	Total Private	4,072.8	3,960.4	3,634.0	-438.8	-10.8%
60000001	Goods Producing	1,148.2	1,063.7	769.0	-379.2	-33.0%
70000001	Service-Providing	3,597.4	3,577.5	3,506.0	-91.4	-2.5%
80000001	Private Service Providing	2,924.6	2,896.7	2,865.0	-59.6	-2.0%
100000001	Natural Resources and Mining	9.7	9.7	7.8	-1.9	-19.6%
200000001	Construction	224.8	218.7	164.0	-60.8	-27.0%
202360001	Construction of Buildings.....	50.5	49.7	36.2	-14.3	-28.3%
202370001	Heavy and Civil Engineering Construction.....	24.1	23.2	18.7	-5.4	-22.4%
202380001	Specialty Trade Contractors.....	150.2	145.8	109.1	-41.1	-27.4%
202381001	Foundation, Structure and Building Exterior Contractors...	31.8	31.7	22.8	-9.0	-28.3%
202382001	Building Equipment Contractors.....	67.3	64.8	52.0	-15.3	-22.7%
202383001	Building Finishing Contractors.....	27.4	26.5	18.2	-9.2	-33.6%
202389001	Other Specialty Trade Contractors.....	23.7	22.8	16.1	-7.6	-32.1%
300000001	Manufacturing	913.7	835.3	597.2	-316.5	-34.6%
310000001	Durable Goods.....	731.0	666.8	458.4	-272.6	-37.3%
313270001	Nonmetallic Mineral Product Manufacturing.....	20.7	19.1	13.3	-7.4	-35.7%
313310001	Primary Metal Manufacturing.....	35.3	32.1	24.0	-11.3	-32.0%
313315001	Foundries.....	18.1	16.3	12.2	-5.9	-32.6%
313320001	Fabricated Metal Product Manufacturing.....	98.0	89.8	79.0	-19.0	-19.4%
313327001	Machine Shops; Turned Product; Screw, Nuts, Bolts.....	29.3	26.6	26.9	-2.4	-8.2%
313328001	Coating, Engraving, Heat Treating.....	21.1	18.0	14.8	-6.3	-29.9%
313329001	Other Fabricated Metal Product Manufacturing.....	N/A	15.4	10.2	-5.2	-33.8%
313330001	Machinery Manufacturing.....	103.5	90.4	67.9	-35.6	-34.4%
313335001	Metalworking Machinery Manufacturing.....	57.6	49.1	35.3	-22.3	-38.7%
313340001	Computer and Electronic Product Manufacturing.....	N/A	23.6	21.3	-2.3	-9.7%
313360001	Transportation Equipment Manufacturing.....	354.4	322.5	187.7	-166.7	-47.0%
313361001	Motor Vehicle Manufacturing.....	101.7	94.3	56.6	-45.1	-44.3%
313363001	Motor Vehicle Parts Manufacturing.....	231.0	206.3	119.6	-111.4	-48.2%
313370001	Furniture and Related Product Manufacturing.....	39.1	37.7	25.3	-13.8	-35.3%
320000001	Non-Durable Goods.....	182.7	168.5	138.8	-43.9	-24.0%
323110001	Food Manufacturing.....	35.3	35.3	34.4	-0.9	-2.5%
323230001	Printing and Related Support Activities.....	23.4	22.2	17.1	-6.3	-26.9%
323250001	Chemical Manufacturing.....	37.4	34.6	27.3	-10.1	-27.0%
323260001	Plastics and Rubber Products Manufacturing.....	54.5	46.9	37.5	-17.0	-31.2%
323261001	Plastics Product Manufacturing.....	47.0	40.5	32.6	-14.4	-30.6%
400000001	Trade, Transportation and Utilities	886.7	870.6	791.4	-95.3	-10.7%
410000001	Wholesale Trade.....	188.0	183.0	169.3	-18.7	-9.9%
414230001	Merchant Wholesalers, Durable Goods.....	107.1	104.2	98.3	-8.8	-8.2%
414231001	Motor Vehicle, Motor Vehicle Parts and Supplies.....	20.7	19.7	19.2	-1.5	-7.2%
414234001	Professional and Commercial Equipment and Supplies.....	16.9	16.5	15.2	-1.7	-10.1%
414240001	Merchant Wholesalers, Nondurable Goods.....	52.5	51.7	48.1	-4.4	-8.4%
414250001	Wholesale Electronic Markets and Agents and Brokers....	N/A	27.1	22.9	-4.2	-15.5%
420000001	Retail Trade.....	562.1	553.0	489.3	-72.8	-13.0%
424410001	Motor Vehicle and Parts Dealers.....	64.5	63.6	55.8	-8.7	-13.5%
424440001	Building Material, Garden Equipment and Dealers.....	50.2	48.7	44.5	-5.7	-11.4%
424450001	Food and Beverage Stores.....	101.5	96.9	82.9	-18.6	-18.3%
424451001	Grocery Stores.....	84.9	80.3	66.2	-18.7	-22.0%
424460001	Health and Personal Care Stores.....	34.4	34.3	33.6	-0.8	-2.3%
424470001	Gasoline Stations.....	31.6	30.6	24.3	-7.3	-23.1%
424480001	Clothing and Clothing Accessories Stores.....	40.8	39.9	40.7	-0.1	-0.2%
424510001	Sporting Goods, Hobby, Book and Music Stores.....	26.4	26.2	22.2	-4.2	-15.9%
424520001	General Merchandise Stores.....	126.3	128.1	111.2	-15.1	-12.0%
424530001	Miscellaneous Store Retailers.....	35.8	33.5	26.4	-9.4	-26.3%
430000001	Transportation and Utilities.....	136.6	134.6	132.8	-3.8	-2.8%
434820001	Rail Transportation.....	5.8	5.3	4.6	-1.2	-20.7%
434840001	Truck Transportation.....	38.6	37.7	42.5	3.9	10.1%
434841001	General Freight Trucking.....	25.8	24.8	29.2	3.4	13.2%
434842001	Specialized Freight Trucking.....	12.9	12.9	13.3	0.4	3.1%
434930001	Warehousing and Storage.....	N/A	15.8	13.1	-2.7	-17.1%
500000001	Information	77.2	76.6	64.8	-12.4	-16.1%
505110001	Publishing Industries (except Internet).....	N/A	27.6	22.3	-5.3	-19.2%
505170001	Telecommunications.....	N/A	27.3	23.6	-3.7	-13.6%
505171001	Wired Telecommunications Carriers.....	N/A	22.1	14.6	-7.5	-33.9%

The Recent Jobs Record in Michigan

Code	Industry: Non-farm jobs: (1,000)	June of Each Year			Change: 2008/2000*	
		2000	2001	2008	Thousands	Percent
550000001	Financial Activities	212.3	214.3	210.2	-2.1	-1.0%
555200001	Finance and Insurance.....	152.8	156.6	155.6	2.8	1.8%
555220001	Credit Intermediation and Related Activities.....	N/A	82.4	80.9	-1.5	-1.8%
555240001	Insurance Carriers and Related Activities.....	59.3	61.0	59.6	0.3	0.5%
555300001	Real Estate and Rental and Leasing.....	59.5	57.7	54.6	-4.9	-8.2%
555310001	Real Estate.....	N/A	38.3	37.0	-1.3	-3.4%
600000001	Professional and Business Services	648.3	617.4	586.3	-62.0	-9.6%
605400001	Professional, Scientific and Technical Services.....	275.4	270.0	241.8	-33.6	-12.2%
605411001	Legal Services.....	N/A	28.7	29.4	0.7	2.4%
605412001	Accounting, Tax Preparation, Bookkeeping and Payroll..	29.7	30.1	27.4	-2.3	-7.7%
605413001	Architectural, Engineering and Related.....	84.8	81.7	65.7	-19.1	-22.5%
605415001	Computer Systems Design and Related Services.....	N/A	46.8	40.4	-6.4	-13.7%
605416001	Management, Scientific and Technical Consulting.....	24.8	23.9	19.9	-4.9	-19.8%
605417001	Scientific Research and Development Services.....	N/A	23.4	21.0	-2.4	-10.3%
605418001	Advertising and Related Services.....	18.1	17.7	15.2	-2.9	-16.0%
605419001	Other Professional, Scientific and Technical Services....	N/A	14.5	17.1	2.6	17.9%
605500001	Management of Companies and Enterprises.....	71.6	68.8	55.7	-15.9	-22.2%
605600001	Administrative, Support and Waste Management Svcs.....	301.3	278.6	288.8	-12.5	-4.1%
605613001	Employment Services.....	181.9	157.8	160.1	-21.8	-12.0%
605614001	Business Support Services.....	N/A	10.3	14.9	4.6	44.7%
605617001	Services to Buildings and Dwellings.....	51.6	52.3	55.0	3.4	6.6%
650000001	Education and Health Services	502.1	520.3	602.4	100.3	20.0%
656100001	Educational Services.....	55.9	62.6	74.4	18.5	33.1%
656111001	Elementary and Secondary Schools.....	17.9	19.7	28.6	10.7	59.8%
656113001	Colleges, Universities and Professional Schools.....	25.7	28.1	28.3	2.6	10.1%
656200001	Health Care and Social Assistance.....	446.2	457.7	528.0	81.8	18.3%
656210001	Ambulatory Health Care Services.....	N/A	149.0	178.8	29.8	20.0%
656211001	Offices of Physicians.....	N/A	58.0	71.0	13.0	22.4%
656216001	Home Health Care Services.....	N/A	20.8	30.1	9.3	44.7%
656220001	Hospitals.....	N/A	170.6	191.6	21.0	12.3%
656221001	General Medical and Surgical Hospitals.....	N/A	167.3	187.0	19.7	11.8%
656230001	Nursing and Residential Care Facilities.....	N/A	87.4	95.0	7.6	8.7%
656231001	Nursing Care Facilities.....	N/A	40.1	43.1	3.0	7.5%
656240001	Social Assistance.....	N/A	50.7	62.6	11.9	23.5%
656241001	Individual and Family Services.....	N/A	22.8	26.6	3.8	16.7%
700000001	Leisure and Hospitality	420.6	417.0	430.9	10.3	2.4%
707100001	Arts, Entertainment and Recreation.....	72.6	72.7	74.9	2.3	3.2%
707110001	Performing Arts, Spectator Sports and Related.....	12.5	12.5	10.6	-1.9	-15.2%
707130001	Amusement, Gambling and Recreation Industries.....	56.7	56.5	58.5	1.8	3.2%
707132001	Gambling Industries.....	6.3	7.9	8.0	1.7	27.0%
707139001	Other Amusement and Recreation Industries.....	48.0	47.5	47.6	-0.4	-0.8%
707200001	Accommodation and Food Services.....	348.0	344.3	356.0	8.0	2.3%
707210001	Accommodation.....	N/A	39.7	39.2	-0.5	-1.3%
707220001	Food Services and Drinking Places.....	N/A	304.6	316.8	12.2	4.0%
707221001	Full-Service Restaurants.....	121.8	121.3	138.5	16.7	13.7%
707222001	Limited-Service Eating Places.....	N/A	123.5	135.0	11.5	9.3%
800000001	Other Services	177.4	180.5	179.0	1.6	0.9%
808110001	Repair and Maintenance.....	N/A	44.8	38.8	-6.0	-13.4%
808120001	Personal and Laundry Services.....	N/A	42.9	40.3	-2.6	-6.1%
808130001	Religious, Grantmaking, Civic, Professional, Similar Orgs.	89.3	92.8	99.9	10.6	11.9%
900000001	Government	672.8	680.8	641.0	-31.8	-4.7%
909100001	Federal Government.....	64.0	56.6	53.4	-10.6	-16.6%
909191201	Postal Service.....	31.1	31.1	26.0	-5.1	-16.4%
909200001	State Government.....	157.9	164.5	155.9	-2.0	-1.3%
909216111	State Government educational services.....	78.6	86.0	93.4	14.8	18.8%
909226221	State Government Hospitals.....	13.4	12.6	16.5	3.1	23.1%
909300001	Local Government.....	450.9	459.7	431.7	-19.2	-4.3%
909316111	Local Government educational services.....	260.3	260.3	238.5	-21.8	-8.4%
909326221	Local Government Hospitals.....	13.2	13.5	13.9	0.7	5.3%
909361121	Local Government Junior Colleges.....	17.1	17.1	19.8	2.7	15.8%

© CW McMillion/MBG Information Services

The Jobs Record in Ann Arbor, Michigan

Code	Industry: Non-farm jobs: (1,000)	June of Each Year			Change: 2008/2000	
		2000	2001	2008	Thousands	Percent
1	Total Nonfarm	201.1	211.4	196.4	-4.7	-2.3%
50000001	Total Private	144.3	148.3	129.6	-14.7	-10.2%
60000001	Goods Producing	37.8	35.1	20.8	-17.0	-45.0%
70000001	Service-Providing	163.3	176.3	175.6	12.3	7.5%
80000001	Private Service Providing	106.5	113.2	108.8	2.3	2.2%
150000001	Natural Resources and Mining and Construction	6.8	6.9	4.9	-1.9	-27.9%
300000001	Manufacturing	31.0	28.2	15.9	-15.1	-48.7%
310000001	Durable Goods.....	24.1	22.7	11.1	-13.0	-53.9%
313360001	Transportation Equipment Manufacturing.....	15.9	14.0	6.1	-9.8	-61.6%
400000001	Trade, Transportation and Utilities	28.0	30.1	26.9	-1.1	-3.9%
410000001	Wholesale Trade.....	5.3	5.4	6.0	0.7	13.2%
420000001	Retail Trade.....	19.6	21.4	17.2	-2.4	-12.2%
424520001	General Merchandise Stores.....	3.5	4.3	3.2	-0.3	-8.6%
430000001	Transportation and Utilities.....	3.1	3.3	3.7	0.6	19.4%
500000001	Information	4.5	4.8	3.4	-1.1	-24.4%
550000001	Financial Activities	5.9	6.2	5.9	0.0	0.0%
600000001	Professional and Business Services	30.2	32.0	27.2	-3.0	-9.9%
605400001	Professional, Scientific and Technical Services.....	17.4	17.3	14.6	-2.8	-16.1%
605600001	Administrative and Support and Waste Management and	10.4	12.3	11.5	1.1	10.6%
650000001	Education and Health Services	17.9	19.4	24.3	6.4	35.8%
656200001	Health Care and Social Assistance.....	18.4	18.7	21.2	2.8	15.2%
700000001	Leisure and Hospitality	13.9	14.4	14.5	0.6	4.3%
707200001	Accommodation and Food Services.....	11.1	11.4	11.9	0.8	7.2%
800000001	Other Services	6.1	6.3	6.6	0.5	8.2%
900000001	Government	56.8	63.1	66.8	10.0	17.6%
909100001	Federal Government.....	3.4	2.8	3.0	-0.4	-11.8%
909200001	State Government.....	40.4	45.8	49.1	8.7	21.5%
909300001	Local Government.....	13.0	14.5	14.7	1.7	13.1%

US Dept of Labor, BLS and MBG Information Services

© CW McMillion/MBG Information Services

The Jobs Record in Battle Creek, Michigan

Code	Industry: Non-farm jobs: (1,000)	June of Each Year			Change: 2008/2000	
		2000	2001	2008	Thousands	Percent
1	Total Nonfarm	63.5	63.3	58.6	-4.9	-7.7%
50000001	Total Private	52.4	52.0	49.2	-3.2	-6.1%
60000001	Goods Producing	18.5	17.7	15.1	-3.4	-18.4%
70000001	Service-Providing	45.0	45.6	43.5	-1.5	-3.3%
80000001	Private Service Providing	33.9	34.3	34.1	0.2	0.6%
150000001	Natural Resources and Mining and Construction	2.8	2.6	2.2	-0.6	-21.4%
300000001	Manufacturing	15.7	15.1	12.9	-2.8	-17.8%
310000001	Durable Goods.....	9.8	9.5	7.9	-1.9	-19.4%
313360001	Transportation Equipment Manufacturing.....	5.2	5.3	4.7	-0.5	-9.6%
320000001	Non-Durable Goods.....	5.9	5.6	5.0	-0.9	-15.3%
400000001	Trade, Transportation and Utilities	10.0	10.4	9.9	-0.1	-1.0%
420000001	Retail Trade.....	7.5	7.8	6.6	-0.9	-12.0%
550000001	Financial Activities	1.8	1.7	1.5	-0.3	-16.7%
600000001	Professional and Business Services	5.6	5.5	5.0	-0.6	-10.7%
650000001	Education and Health Services	8.0	7.9	9.3	1.3	16.3%
700000001	Leisure and Hospitality	5.8	6.0	5.7	-0.1	-1.7%
800000001	Other Services	2.7	2.4	2.2	-0.5	-18.5%
900000001	Government	11.1	11.3	9.4	-1.7	-15.3%

US Dept of Labor, BLS and MBG Information Services

The Jobs Record in Detroit-Livonia-Dearborn, Michigan

Code	Industry: Non-farm jobs: (1,000)	June of Each Year			Change: 2008/2000*	
		2000	2001	2008	Thousands	Percent
1	Total Nonfarm	929.5	906.8	774.8	-154.7	-16.6%
50000001	Total Private	804.7	783.4	663.2	-141.5	-17.6%
60000001	Goods Producing	185.9	172.3	108.0	-77.9	-41.9%
70000001	Service-Providing	743.6	734.5	666.8	-76.8	-10.3%
80000001	Private Service Providing	618.8	611.1	555.2	-63.6	-10.3%
150000001	Natural Resources and Mining and Construction	31.5	30.7	21.2	-10.3	-32.7%
152380001	Specialty Trade Contractors.....	22.5	22.1	16.0	-6.5	-28.9%
300000001	Manufacturing	154.4	141.6	86.8	-67.6	-43.8%
310000001	Durable Goods.....	134.0	122.2	72.5	-61.5	-45.9%
313360001	Transportation Equipment Manufacturing.....	71.7	65.4	40.7	-31.0	-43.2%
313361001	Motor Vehicle Manufacturing.....	29.2	27.1	16.6	-12.6	-43.2%
313363001	Motor Vehicle Parts Manufacturing.....	43.8	39.5	22.7	-21.1	-48.2%
320000001	Non-Durable Goods.....	20.4	19.4	14.3	-6.1	-29.9%
400000001	Trade, Transportation and Utilities	184.2	180.7	148.3	-35.9	-19.5%
410000001	Wholesale Trade.....	40.7	39.6	34.0	-6.7	-16.5%
414230001	Merchant Wholesalers, Durable Goods.....	20.3	19.5	17.3	-3.0	-14.8%
414240001	Merchant Wholesalers, Nondurable Goods.....	14.0	13.5	11.6	-2.4	-17.1%
420000001	Retail Trade.....	91.9	90.9	71.2	-20.7	-22.5%
424450001	Food and Beverage Stores.....	16.5	16.2	13.6	-2.9	-17.6%
424460001	Health and Personal Care Stores.....	9.2	9.1	7.6	-1.6	-17.4%
424480001	Clothing and Clothing Accessories Stores.....	9.7	9.5	7.0	-2.7	-27.8%
424520001	General Merchandise Stores.....	20.0	19.6	14.2	-5.8	-29.0%
430000001	Transportation and Utilities.....	51.6	50.2	43.1	-8.5	-16.5%
434000891	Transportation and Warehousing.....	47.0	45.8	39.1	-7.9	-16.8%
434810001	Air Transportation.....	15.3	15.3	10.8	-4.5	-29.4%
434930001	Warehousing and Storage.....	5.7	5.7	3.7	-2.0	-35.1%
500000001	Information	14.8	15.1	13.2	-1.6	-10.8%
505110001	Publishing Industries (except Internet).....	5.5	5.5	6.9	1.4	25.5%
505170001	Telecommunications.....	5.7	5.6	3.3	-2.4	-42.1%
550000001	Financial Activities	42.2	40.2	36.3	-5.9	-14.0%
555200001	Finance and Insurance.....	30.1	29.3	28.3	-1.8	-6.0%
555220001	Credit Intermediation and Related Activities.....	16.9	17.1	18.4	1.5	8.9%
600000001	Professional and Business Services	139.9	134.7	116.7	-23.2	-16.6%
605400001	Professional, Scientific and Technical Services.....	54.8	55.2	50.6	-4.2	-7.7%
605412001	Accounting, Tax Preparation, Bookkeeping and Payroll...	5.8	6.4	6.4	0.6	10.3%
605415001	Computer Systems Design and Related Services.....	N/A	6.8	7.1	0.3	4.4%
605417001	Scientific Research and Development Services.....	14.8	15.3	10.9	-3.9	-26.4%
605500001	Management of Companies and Enterprises.....	25.4	25.9	21.5	-3.9	-15.4%
605600001	Administrative, Support, Waste Management and Svcs.....	59.7	53.6	44.6	-15.1	-25.3%
605613001	Employment Services.....	32.5	27.6	19.4	-13.1	-40.3%
605617001	Services to Buildings and Dwellings.....	10.4	10.3	9.3	-1.1	-10.6%
650000001	Education and Health Services	115.3	118.2	124.6	9.3	8.1%
656100001	Educational Services.....	11.7	12.2	15.4	3.7	31.6%
656111001	Elementary and Secondary Schools.....	3.7	4.2	5.9	2.2	59.5%
656200001	Health Care and Social Assistance.....	103.6	106.0	109.2	5.6	5.4%
656210001	Ambulatory Health Care Services.....	N/A	26.6	29.7	3.1	11.7%
656220001	Hospitals.....	45.6	46.8	46.7	1.1	2.4%
656230001	Nursing and Residential Care Facilities.....	17.9	18.5	18.8	0.9	5.0%
656240001	Social Assistance.....	13.5	14.1	14.0	0.5	3.7%
700000001	Leisure and Hospitality	82.0	83.4	81.5	-0.5	-0.6%
707100001	Arts, Entertainment and Recreation.....	18.4	20.8	20.1	1.7	9.2%
707130001	Amusement, Gambling and Recreation Industries.....	11.2	13.5	13.2	2.0	17.9%
707132001	Gambling Industries.....	6.1	7.9	7.9	1.8	29.5%
707200001	Accommodation and Food Services.....	63.6	62.6	61.4	-2.2	-3.5%
707220001	Food Services and Drinking Places.....	57.4	56.6	56.7	-0.7	-1.2%
707221001	Full-Service Restaurants.....	20.7	20.7	23.6	2.9	14.0%
707222001	Limited-Service Eating Places.....	N/A	23.5	23.5	0.0	0.0%
800000001	Other Services	40.4	38.8	34.6	-5.8	-14.4%
900000001	Government	124.8	123.4	111.6	-13.2	-10.6%
909100001	Federal Government.....	19.0	16.7	15.4	-3.6	-18.9%
909191201	Postal Service.....	8.9	8.9	6.7	-2.2	-24.7%
909200001	State Government.....	18.4	18.5	18.1	-0.3	-1.6%
909216111	State Government educational services.....	9.1	9.4	10.2	1.1	12.1%
909226221	State Government Hospitals.....	1.6	1.5	0.6	-1.0	-62.5%
909300001	Local Government.....	87.4	88.2	78.1	-9.3	-10.6%
909316111	Local Government educational services.....	45.7	46.4	41.7	-4.0	-8.8%
909361121	Local Government Junior Colleges.....	2.2	2.4	3.1	0.9	40.9%

US Department of Labor, BLS and MBG Information Services Industries with no data for 2000 show 2001-'08 change.

The Jobs Record in Detroit-Warren-Livonia, Michigan

Code	Industry: Non-farm jobs: (1,000)	June of Each Year			Change: 2008/2000	
		2000	2001	2008	Thousands	Percent
1	Total Nonfarm	2,250.0	2,182.4	1,962.1	-287.9	-12.8%
50000001	Total Private	2,011.9	1,945.1	1,734.7	-277.2	-13.8%
60000001	Goods Producing	502.6	464.4	313.6	-189.0	-37.6%
70000001	Service-Providing	1,747.4	1,718.0	1,648.5	-98.9	-5.7%
80000001	Private Service Providing	1,509.3	1,480.7	1,421.1	-88.2	-5.8%
150000001	Natural Resources and Mining and Construction	102.5	98.3	66.8	-35.7	-34.8%
152380001	Specialty Trade Contractors.....	71.8	69.2	47.3	-24.5	-34.1%
300000001	Manufacturing	400.1	366.1	246.8	-153.3	-38.3%
310000001	Durable Goods.....	344.2	314.2	206.5	-137.7	-40.0%
313360001	Transportation Equipment Manufacturing.....	182.2	170.0	107.0	-75.2	-41.3%
313361001	Motor Vehicle Manufacturing.....	68.2	65.1	40.6	-27.6	-40.5%
313363001	Motor Vehicle Parts Manufacturing.....	110.2	101.4	62.4	-47.8	-43.4%
320000001	Non-Durable Goods.....	55.9	51.9	40.3	-15.6	-27.9%
400000001	Trade, Transportation and Utilities	419.7	412.3	365.1	-54.6	-13.0%
410000001	Wholesale Trade.....	104.2	102.3	89.8	-14.4	-13.8%
414230001	Merchant Wholesalers, Durable Goods.....	60.5	59.0	54.6	-5.9	-9.8%
414240001	Merchant Wholesalers, Nondurable Goods.....	27.3	27.3	23.0	-4.3	-15.8%
420000001	Retail Trade.....	243.8	239.9	210.9	-32.9	-13.5%
424450001	Food and Beverage Stores.....	41.0	40.6	35.0	-6.0	-14.6%
424460001	Health and Personal Care Stores.....	19.1	18.8	17.5	-1.6	-8.4%
424480001	Clothing and Clothing Accessories Stores.....	21.6	21.3	21.7	0.1	0.5%
424520001	General Merchandise Stores.....	56.3	56.5	45.2	-11.1	-19.7%
430000001	Transportation and Utilities.....	71.7	70.1	64.4	-7.3	-10.2%
434000891	Transportation and Warehousing	65.9	63.6	56.8	-9.1	-13.8%
500000001	Information	43.0	42.9	33.1	-9.9	-23.0%
505170001	Telecommunications.....	14.1	14.5	11.4	-2.7	-19.1%
550000001	Financial Activities	117.8	117.3	110.7	-7.1	-6.0%
555200001	Finance and Insurance.....	82.2	83.5	82.0	-0.2	-0.2%
555220001	Credit Intermediation and Related Activities.....	41.5	43.0	44.1	2.6	6.3%
600000001	Professional and Business Services	409.2	385.0	350.6	-58.6	-14.3%
605400001	Professional, Scientific and Technical Services.....	178.6	172.8	159.1	-19.5	-10.9%
605412001	Accounting, Tax Preparation, Bookkeeping and Payroll..	18.7	18.6	15.2	-3.5	-18.7%
605415001	Computer Systems Design and Related Services.....	25.5	32.1	29.9	4.4	17.3%
605500001	Management of Companies and Enterprises.....	46.0	45.0	39.7	-6.3	-13.7%
605600001	Administrative, Support, Waste Management and Svcs....	184.6	167.2	151.8	-32.8	-17.8%
605613001	Employment Services.....	116.7	100.8	82.4	-34.3	-29.4%
605617001	Services to Buildings and Dwellings.....	25.9	26.3	27.5	1.6	6.2%
650000001	Education and Health Services	239.1	245.0	284.6	45.5	19.0%
656111001	Elementary and Secondary Schools.....	7.9	8.6	12.7	4.8	60.8%
656200001	Health Care and Social Assistance.....	219.6	224.7	252.9	33.3	15.2%
656210001	Ambulatory Health Care Services.....	44.8	73.3	87.9	43.1	96.2%
656220001	Hospitals.....	87.1	88.8	94.8	7.7	8.8%
656230001	Nursing and Residential Care Facilities.....	37.3	38.5	41.5	4.2	11.3%
656240001	Social Assistance.....	23.2	24.1	28.7	5.5	23.7%
700000001	Leisure and Hospitality	186.1	184.9	189.9	3.8	2.0%
707100001	Arts, Entertainment and Recreation.....	37.7	39.6	38.1	0.4	1.1%
707200001	Accommodation and Food Services.....	148.4	145.3	151.8	3.4	2.3%
707220001	Food Services and Drinking Places.....	135.5	133.1	142.1	6.6	4.9%
707221001	Full-Service Restaurants.....	53.1	52.6	63.7	10.6	20.0%
707222001	Limited-Service Eating Places.....	54.4	54.5	58.7	4.3	7.9%
800000001	Other Services	94.4	93.3	87.1	-7.3	-7.7%
900000001	Government	238.1	237.3	227.4	-10.7	-4.5%
909100001	Federal Government.....	33.3	29.8	28.3	-5.0	-15.0%
909191201	Postal Service.....	16.1	16.1	13.2	-2.9	-18.0%
909200001	State Government.....	25.3	25.6	25.4	0.1	0.4%
909216111	State Government educational services.....	11.5	12.0	12.7	1.2	10.4%
909300001	Local Government.....	179.5	181.9	173.7	-5.8	-3.2%
909316111	Local Government educational services.....	104.4	106.6	102.6	-1.8	-1.7%
909361121	Local Government Junior Colleges.....	5.7	6.1	6.6	0.9	15.8%

The Jobs Record in Flint, Michigan

Code	Industry: Non-farm jobs: (1,000)	June of Each Year			Change: 2008/2000	
		2000	2001	2008	Thousands	Percent
1	Total Nonfarm.....	167.2	166.2	144.5	-22.7	-13.6%
50000001	Total Private.....	142.5	140.8	120.9	-21.6	-15.2%
60000001	Goods Producing.....	39.8	37.0	19.2	-20.6	-51.8%
70000001	Service-Providing.....	127.4	129.2	125.3	-2.1	-1.6%
80000001	Private Service Providing.....	102.7	103.8	101.7	-1.0	-1.0%
15000001	Natural Resources and Mining and Construction.....	8.5	8.3	5.0	-3.5	-41.2%
30000001	Manufacturing.....	31.3	28.7	14.2	-17.1	-54.6%
31000001	Durable Goods.....	27.9	25.9	11.2	-16.7	-59.9%
313360001	Transportation Equipment Manufacturing.....	23.3	21.6	9.0	-14.3	-61.4%
313363001	Motor Vehicle Parts Manufacturing.....	12.7	12.1	3.6	-9.1	-71.7%
40000001	Trade, Transportation and Utilities.....	34.3	34.8	31.2	-3.1	-9.0%
41000001	Wholesale Trade.....	7.1	6.9	6.4	-0.7	-9.9%
42000001	Retail Trade.....	23.6	23.2	21.0	-2.6	-11.0%
424520001	General Merchandise Stores.....	5.8	5.8	5.0	-0.8	-13.8%
43000001	Transportation and Utilities.....	3.6	4.7	3.8	0.2	5.6%
50000001	Information.....	2.6	2.6	2.8	0.2	7.7%
55000001	Financial Activities.....	6.9	7.0	7.0	0.1	1.4%
60000001	Professional and Business Services.....	15.7	14.2	13.4	-2.3	-14.6%
65000001	Education and Health Services.....	21.7	22.8	25.1	3.4	15.7%
70000001	Leisure and Hospitality.....	15.2	15.7	16.2	1.0	6.6%
80000001	Other Services.....	6.3	6.7	6.0	-0.3	-4.8%
90000001	Government.....	24.7	25.4	23.6	-1.1	-4.5%
909100001	Federal Government.....	1.8	1.5	1.4	-0.4	-22.2%
909200001	State Government.....	2.4	2.8	2.4	0.0	0.0%
909300001	Local Government.....	20.5	21.1	19.8	-0.7	-3.4%

US Dept of Labor, BLS and MBG Information Services

The Jobs Record in Grand Rapids-Wyoming, Michigan

Code	Industry: Non-farm jobs: (1,000)	June of Each Year			Change: 2008/2000*	
		2000	2001	2008	Thousands	Percent
1	Total Nonfarm.....	408.3	408.5	396.0	-12.3	-3.0%
50000001	Total Private.....	371.0	371.4	359.6	-11.4	-3.1%
60000001	Goods Producing.....	111.6	108.0	87.1	-24.5	-22.0%
70000001	Service-Providing.....	296.7	300.5	308.9	12.2	4.1%
80000001	Private Service Providing.....	259.4	263.4	272.5	13.1	5.1%
15000001	Natural Resources and Mining and Construction.....	22.1	21.7	17.3	-4.8	-21.7%
30000001	Manufacturing.....	89.5	86.3	69.8	-19.7	-22.0%
31000001	Durable Goods.....	61.9	59.5	48.0	-13.9	-22.5%
313360001	Transportation Equipment Manufacturing.....	N/A	15.2	13.9	-1.3	-8.6%
313370001	Furniture and Related Product Manufacturing.....	12.2	11.6	6.5	-5.7	-46.7%
32000001	Non-Durable Goods.....	27.6	26.8	21.8	-5.8	-21.0%
40000001	Trade, Transportation and Utilities.....	81.5	81.6	74.4	-7.1	-8.7%
41000001	Wholesale Trade.....	24.1	23.8	22.7	-1.4	-5.8%
42000001	Retail Trade.....	46.1	46.1	40.9	-5.2	-11.3%
424520001	General Merchandise Stores.....	11.1	10.6	9.2	-1.9	-17.1%
43000001	Transportation and Utilities.....	11.3	11.7	10.8	-0.5	-4.4%
50000001	Information.....	6.1	6.3	5.5	-0.6	-9.8%
55000001	Financial Activities.....	20.4	20.5	22.2	1.8	8.8%
555200001	Finance and Insurance.....	15.2	16.2	18.2	3.0	19.7%
60000001	Professional and Business Services.....	56.7	57.1	60.4	3.7	6.5%
605400001	Professional, Scientific and Technical Services.....	15.5	15.8	14.7	-0.8	-5.2%
605500001	Management of Companies and Enterprises.....	6.8	6.5	4.8	-2.0	-29.4%
605600001	Administrative, Support, Waste Management and Svcs....	34.4	34.8	40.9	6.5	18.9%
605613001	Employment Services.....	20.5	20.2	29.4	8.9	43.4%
65000001	Education and Health Services.....	45.4	48.8	59.9	14.5	31.9%
656100001	Educational Services.....	8.7	9.7	11.8	3.1	35.6%
656200001	Health Care and Social Assistance.....	36.7	39.1	48.1	11.4	31.1%
656210001	Ambulatory Health Care Services.....	11.0	12.1	14.2	3.2	29.1%
656220001	Hospitals.....	15.3	15.5	20.0	4.7	30.7%
656230001	Nursing and Residential Care Facilities.....	7.9	8.4	10.1	2.2	27.8%
70000001	Leisure and Hospitality.....	33.1	32.4	33.6	0.5	1.5%
707200001	Accommodation and Food Services.....	27.7	27.0	28.3	0.6	2.2%
707220001	Food Services and Drinking Places.....	25.6	25.1	26.0	0.4	1.6%
80000001	Other Services.....	16.2	16.7	16.5	0.3	1.9%
90000001	Government.....	37.3	37.1	36.4	-0.9	-2.4%
909100001	Federal Government.....	3.9	3.5	3.3	-0.6	-15.4%
909200001	State Government.....	2.9	3.0	3.9	1.0	34.5%
909300001	Local Government.....	30.5	30.6	29.2	-1.3	-4.3%
909316111	Local Government educational services.....	20.4	19.7	18.4	-2.0	-9.8%

US Department of Labor, BLS and MBG Information Services Industries with no data for 2000 show 2001-'08 change.

© CW McMillion/MBG Information Services

The Jobs Record in Holland-Grand Haven, Michigan

Code	Industry: Non-farm jobs: (1,000)	June of Each Year			Change: 2008/2000	
		2000	2001	2008	Thousands	Percent
1	Total Nonfarm	123.7	118.9	112.6	-11.1	-9.0%
50000001	Total Private	110.1	104.3	98.3	-11.8	-10.7%
60000001	Goods Producing	52.2	49.8	39.6	-12.6	-24.1%
70000001	Service-Providing	71.5	69.1	73.0	1.5	2.1%
80000001	Private Service Providing	57.9	54.5	58.7	0.8	1.4%
150000001	Natural Resources and Mining and Construction	6.9	6.6	5.4	-1.5	-21.7%
300000001	Manufacturing	45.3	43.2	34.2	-11.1	-24.5%
310000001	Durable Goods.....	36.8	34.9	26.3	-10.5	-28.5%
313360001	Transportation Equipment Manufacturing.....	9.5	8.3	4.7	-4.8	-50.5%
400000001	Trade, Transportation and Utilities	19.0	18.6	18.3	-0.7	-3.7%
420000001	Retail Trade.....	12.4	12.1	10.6	-1.8	-14.5%
500000001	Information	0.8	0.8	0.8	0.0	0.0%
550000001	Financial Activities	3.6	3.4	3.0	-0.6	-16.7%
600000001	Professional and Business Services	12.2	9.6	12.2	0.0	0.0%
650000001	Education and Health Services	8.4	8.6	10.1	1.7	20.2%
700000001	Leisure and Hospitality	9.1	8.7	9.2	0.1	1.1%
707200001	Accommodation and Food Services.....	7.8	7.3	7.9	0.1	1.3%
707220001	Food Services and Drinking Places.....	7.4	6.9	7.4	0.0	0.0%
800000001	Other Services	4.8	4.8	5.1	0.3	6.3%
900000001	Government	13.6	14.6	14.3	0.7	5.1%
909200001	State Government.....	3.7	3.9	3.6	-0.1	-2.7%

US Dept of Labor, BLS and MBG Information Services

© CW McMillion/MBG Information Services

The Jobs Record in Jackson, Michigan

Code	Industry: Non-farm jobs: (1,000)	June of Each Year			Change: 2008/2000*	
		2000	2001	2008	Thousands	Percent
1	Total Nonfarm	66.1	64.5	57.9	-8.2	-12.4%
50000001	Total Private	56.1	54.2	48.6	-7.5	-13.4%
60000001	Goods Producing	16.2	14.5	11.1	-5.1	-31.5%
70000001	Service-Providing	49.9	50.0	46.8	-3.1	-6.2%
80000001	Private Service Providing	39.9	39.7	37.5	-2.4	-6.0%
150000001	Natural Resources and Mining and Construction	3.3	3.2	1.9	-1.4	-42.4%
300000001	Manufacturing	12.9	11.3	9.2	-3.7	-28.7%
400000001	Trade, Transportation and Utilities	14.3	14.3	12.3	-2.0	-14.0%
420000001	Retail Trade.....	9.3	9.2	7.5	-1.8	-19.4%
500000001	Information	0.6	0.6	0.5	-0.1	-16.7%
550000001	Financial Activities	N/A	2.4	1.9	-0.5	-20.8%
600000001	Professional and Business Services	4.7	4.6	4.8	0.1	2.1%
650000001	Education and Health Services	9.4	9.0	9.4	0.0	0.0%
700000001	Leisure and Hospitality	6.0	5.9	5.8	-0.2	-3.3%
800000001	Other Services	3.0	2.9	2.8	-0.2	-6.7%
900000001	Government	10.0	10.3	9.3	-0.7	-7.0%

US Department of Labor, BLS and MBG Information Services Industries with no data for 2000 show 2001-'08 change.

© CW McMillion/MBG Information Services

The Jobs Record in Kalamazoo-Portage, Michigan

Code	Industry: Non-farm jobs: (1,000)	June of Each Year			Change: 2008/2000	
		2000	2001	2008	Thousands	Percent
1	Total Nonfarm	150.5	148.3	145.9	-4.6	-3.1%
50000001	Total Private	124.6	122.1	124.3	-0.3	-0.2%
60000001	Goods Producing	37.9	35.2	28.1	-9.8	-25.9%
70000001	Service-Providing	112.6	113.1	117.8	5.2	4.6%
80000001	Private Service Providing	86.7	86.9	96.2	9.5	11.0%
150000001	Natural Resources and Mining and Construction	7.1	7.1	6.1	-1.0	-14.1%
300000001	Manufacturing	30.8	28.1	22.0	-8.8	-28.6%
310000001	Durable Goods.....	16.1	14.7	12.8	-3.3	-20.5%
320000001	Non-Durable Goods.....	14.7	13.4	9.2	-5.5	-37.4%
400000001	Trade, Transportation and Utilities	25.0	24.9	25.2	0.2	0.8%
410000001	Wholesale Trade.....	4.3	4.3	5.3	1.0	23.3%
420000001	Retail Trade.....	16.5	16.4	15.9	-0.6	-3.6%
430000001	Transportation and Utilities.....	4.2	4.2	4.0	-0.2	-4.8%
500000001	Information	1.8	1.9	1.5	-0.3	-16.7%
550000001	Financial Activities	6.8	7.0	8.1	1.3	19.1%
600000001	Professional and Business Services	14.8	14.2	15.6	0.8	5.4%
650000001	Education and Health Services	17.5	17.7	22.1	4.6	26.3%
700000001	Leisure and Hospitality	14.2	14.3	16.7	2.5	17.6%
707200001	Accommodation and Food Services.....	12.3	12.4	15.1	2.8	22.8%
800000001	Other Services	6.6	6.9	7.0	0.4	6.1%
900000001	Government	25.9	26.2	21.6	-4.3	-16.6%
909100001	Federal Government.....	1.9	1.4	1.2	-0.7	-36.8%
909200001	State Government.....	10.9	10.9	6.2	-4.7	-43.1%
909300001	Local Government.....	13.1	13.9	14.2	1.1	8.4%

US Dept of Labor, BLS and MBG Information Services

© CW McMillion/MBG Information Services

The Jobs Record in Lansing-East Lansing, Michigan

Code	Industry: Non-farm jobs: (1,000)	June of Each Year			Change: 2008/2000*	
		2000	2001	2008	Thousands	Percent
1	Total Nonfarm	235.3	235.0	220.7	-14.6	-6.2%
50000001	Total Private	172.8	169.8	161.7	-11.1	-6.4%
60000001	Goods Producing	39.9	36.5	28.4	-11.5	-28.8%
70000001	Service-Providing	195.4	198.5	192.3	-3.1	-1.6%
80000001	Private Service Providing	132.9	133.3	133.3	0.4	0.3%
150000001	Natural Resources and Mining and Construction	10.7	10.5	7.8	-2.9	-27.1%
300000001	Manufacturing	29.2	26.0	20.6	-8.6	-29.5%
310000001	Durable Goods.....	23.3	20.8	16.0	-7.3	-31.3%
313360001	Transportation Equipment Manufacturing.....	15.0	13.3	9.2	-5.8	-38.7%
320000001	Non-Durable Goods.....	5.9	5.2	4.6	-1.3	-22.0%
400000001	Trade, Transportation and Utilities	38.5	39.6	35.2	-3.3	-8.6%
410000001	Wholesale Trade.....	5.8	6.2	5.4	-0.4	-6.9%
420000001	Retail Trade.....	26.8	26.9	23.3	-3.5	-13.1%
424520001	General Merchandise Stores.....	6.5	6.9	5.9	-0.6	-9.2%
430000001	Transportation and Utilities.....	5.9	6.5	6.5	0.6	10.2%
500000001	Information	3.9	3.6	2.8	-1.1	-28.2%
550000001	Financial Activities	13.4	13.9	15.4	2.0	14.9%
600000001	Professional and Business Services	23.8	23.2	20.2	-3.6	-15.1%
605400001	Professional, Scientific and Technical Services.....	9.6	9.8	8.7	-0.9	-9.4%
605600001	Administrative, Support, Waste Management and Svcs.....	N/A	11.2	9.5	-1.7	-15.2%
650000001	Education and Health Services	23.9	22.8	28.5	4.6	19.2%
656200001	Health Care and Social Assistance.....	22.7	21.6	25.6	2.9	12.8%
700000001	Leisure and Hospitality	19.0	18.8	19.3	0.3	1.6%
800000001	Other Services	10.4	11.4	11.9	1.5	14.4%
900000001	Government	62.5	65.2	59.0	-3.5	-5.6%
909100001	Federal Government.....	3.2	2.9	2.4	-0.8	-25.0%
909200001	State Government.....	37.7	39.8	34.7	-3.0	-8.0%
909300001	Local Government.....	21.6	22.5	21.9	0.3	1.4%

US Dept. of Labor, BLS and MBG Information Services Industries with no data for 2000 show 2001-'08 change.

© CW McMillion/MBG Information Services

The Jobs Record in Muskegon-Norton Shores, Michigan

Code	Industry: Non-farm jobs: (1,000)	June of Each Year			Change: 2008/2000	
		2000	2001	2008	Thousands	Percent
1	Total Nonfarm	66.7	65.3	66.0	-0.7	-1.0%
50000001	Total Private	57.4	56.1	56.8	-0.6	-1.0%
60000001	Goods Producing	18.4	17.2	14.4	-4.0	-21.7%
70000001	Service-Providing	48.3	48.1	51.6	3.3	6.8%
80000001	Private Service Providing	39.0	38.9	42.4	3.4	8.7%
150000001	Natural Resources and Mining and Construction	3.0	3.0	1.9	-1.1	-36.7%
300000001	Manufacturing	15.4	14.2	12.5	-2.9	-18.8%
400000001	Trade, Transportation and Utilities	13.0	12.9	14.1	1.1	8.5%
420000001	Retail Trade.....	9.9	9.5	11.5	1.6	16.2%
500000001	Information	1.3	1.3	1.0	-0.3	-23.1%
550000001	Financial Activities	2.2	2.4	1.9	-0.3	-13.6%
600000001	Professional and Business Services	3.8	3.5	3.7	-0.1	-2.6%
650000001	Education and Health Services	8.3	8.5	11.0	2.7	32.5%
700000001	Leisure and Hospitality	7.5	7.4	8.2	0.7	9.3%
707200001	Accommodation and Food Services.....	6.0	6.0	7.0	1.0	16.7%
800000001	Other Services	2.9	2.9	2.5	-0.4	-13.8%
900000001	Government	9.3	9.2	9.2	-0.1	-1.1%

US Dept of Labor, BLS and MBG Information Services

© CW McMillion/MBG Information Services

The Jobs Record in Niles-Benton Harbor, Michigan

Code	Industry: Non-farm jobs: (1,000)	June of Each Year			Change: 2008/2000*	
		2000	2001	2008	Thousands	Percent
1	Total Nonfarm	71.7	70.7	66.7	-5.0	-7.0%
50000001	Total Private	62.8	61.9	57.1	-5.7	-9.1%
60000001	Goods Producing	20.5	20.1	16.9	-3.6	-17.6%
70000001	Service-Providing	51.2	50.6	49.8	-1.4	-2.7%
80000001	Private Service Providing	42.3	41.8	40.2	-2.1	-5.0%
150000001	Natural Resources and Mining and Construction	2.7	2.5	2.4	-0.3	-11.1%
300000001	Manufacturing	17.8	17.6	14.5	-3.3	-18.5%
400000001	Trade, Transportation and Utilities	13.8	13.4	11.7	-2.1	-15.2%
420000001	Retail Trade.....	N/A	8.6	7.2	-1.4	-16.3%
500000001	Information	0.9	0.9	0.8	-0.1	-11.1%
550000001	Financial Activities	2.1	2.3	2.3	0.2	9.5%
600000001	Professional and Business Services	6.6	6.0	5.9	-0.7	-10.6%
650000001	Education and Health Services	8.7	8.9	9.7	1.0	11.5%
700000001	Leisure and Hospitality	7.3	7.1	6.9	-0.4	-5.5%
800000001	Other Services	2.9	3.2	2.9	0.0	0.0%
900000001	Government	8.9	8.8	9.6	0.7	7.9%

US Dept. of Labor, BLS and MBG Information Services Industries with no data for 2000 show 2001-'08 change.

The Jobs Record in Saginaw-Saginaw Township North, Michigan

Code	Industry: Non-farm jobs: (1,000)	June of Each Year			Change: 2008/2000	
		2000	2001	2008	Thousands	Percent
1	Total Nonfarm	100.4	98.3	88.3	-12.1	-12.1%
50000001	Total Private	88.6	86.1	75.9	-12.7	-14.3%
60000001	Goods Producing	25.1	23.9	14.5	-10.6	-42.2%
70000001	Service-Providing	75.3	74.4	73.8	-1.5	-2.0%
80000001	Private Service Providing	63.5	62.2	61.4	-2.1	-3.3%
150000001	Natural Resources and Mining and Construction	4.7	5.4	3.4	-1.3	-27.7%
300000001	Manufacturing	20.4	18.5	11.1	-9.3	-45.6%
310000001	Durable Goods.....	18.6	16.8	10.4	-8.2	-44.1%
313360001	Transportation Equipment Manufacturing.....	9.5	8.3	4.4	-5.1	-53.7%
400000001	Trade, Transportation and Utilities	20.2	19.0	17.3	-2.9	-14.4%
410000001	Wholesale Trade.....	3.1	2.8	2.5	-0.6	-19.4%
420000001	Retail Trade.....	14.6	13.6	12.4	-2.2	-15.1%
430000001	Transportation and Utilities.....	2.5	2.6	2.4	-0.1	-4.0%
500000001	Information	2.0	2.0	1.3	-0.7	-35.0%
550000001	Financial Activities	4.2	4.2	4.3	0.1	2.4%
600000001	Professional and Business Services	9.0	8.9	9.6	0.6	6.7%
650000001	Education and Health Services	13.4	13.6	16.3	2.9	21.6%
700000001	Leisure and Hospitality	10.3	10.3	9.2	-1.1	-10.7%
800000001	Other Services	4.4	4.2	3.4	-1.0	-22.7%
900000001	Government	11.8	12.2	12.4	0.6	5.1%
909100001	Federal Government.....	1.5	1.3	1.2	-0.3	-20.0%
909200001	State Government.....	2.2	2.2	2.6	0.4	18.2%
909300001	Local Government.....	8.1	8.7	8.6	0.5	6.2%

US Dept of Labor, BLS and MBG Information Services

The Jobs Record in Warren-Troy-Farmington Hills, Michigan

Code	Industry: Non-farm jobs: (1,000)	June of Each Year			Change: 2008/2000*	
		2000	2001	2008	Thousands	Percent
1	Total Nonfarm	1,320.5	1,275.6	1,187.3	-133.2	-10.1%
50000001	Total Private	1,207.2	1,161.7	1,071.5	-135.7	-11.2%
60000001	Goods Producing	316.7	292.1	205.6	-111.1	-35.1%
70000001	Service-Providing	1,003.8	983.5	981.7	-22.1	-2.2%
80000001	Private Service Providing	890.5	869.6	865.9	-24.6	-2.8%
150000001	Natural Resources and Mining and Construction	71.0	67.6	45.6	-25.4	-35.8%
152360001	Construction of Buildings.....	13.1	12.5	9.1	-4.0	-30.5%
152380001	Specialty Trade Contractors.....	49.3	47.1	31.3	-18.0	-36.5%
300000001	Manufacturing	245.7	224.5	160.0	-85.7	-34.9%
310000001	Durable Goods.....	210.2	192.0	134.0	-76.2	-36.3%
313320001	Fabricated Metal Product Manufacturing.....	32.9	29.3	25.7	-7.2	-21.9%
313330001	Machinery Manufacturing.....	35.9	31.1	22.6	-13.3	-37.0%
313360001	Transportation Equipment Manufacturing.....	110.5	104.6	66.3	-44.2	-40.0%
313361001	Motor Vehicle Manufacturing.....	39.0	38.0	24.0	-15.0	-38.5%
313363001	Motor Vehicle Parts Manufacturing.....	66.4	61.9	39.7	-26.7	-40.2%
320000001	Non-Durable Goods.....	35.5	32.5	26.0	-9.5	-26.8%
400000001	Trade, Transportation and Utilities	235.5	231.6	216.8	-18.7	-7.9%
410000001	Wholesale Trade.....	63.5	62.7	55.8	-7.7	-12.1%
414230001	Merchant Wholesalers, Durable Goods.....	40.2	39.5	37.3	-2.9	-7.2%
414240001	Merchant Wholesalers, Nondurable Goods.....	13.3	13.8	11.4	-1.9	-14.3%
414250001	Wholesale Electronic Markets and Agents and Brokers.....	10.0	9.4	7.1	-2.9	-29.0%
420000001	Retail Trade.....	151.9	149.0	139.7	-12.2	-8.0%
424410001	Motor Vehicle and Parts Dealers.....	17.8	17.7	16.1	-1.7	-9.6%
424450001	Food and Beverage Stores.....	24.5	24.4	21.4	-3.1	-12.7%
424460001	Health and Personal Care Stores.....	9.9	9.7	9.9	0.0	0.0%
424480001	Clothing and Clothing Accessories Stores.....	11.9	11.8	14.7	2.8	23.5%
424520001	General Merchandise Stores.....	36.3	36.9	31.0	-5.3	-14.6%
430000001	Transportation and Utilities.....	20.1	19.9	21.3	1.2	6.0%
434000891	Transportation and Warehousing.....	18.9	17.8	17.7	-1.2	-6.3%
500000001	Information	28.2	27.8	19.9	-8.3	-29.4%
505170001	Telecommunications.....	8.4	8.9	8.1	-0.3	-3.6%
550000001	Financial Activities	75.6	77.1	74.4	-1.2	-1.6%
555200001	Finance and Insurance.....	52.1	54.2	53.7	1.6	3.1%
555220001	Credit Intermediation and Related Activities.....	24.6	25.9	25.7	1.1	4.5%
555240001	Insurance Carriers and Related Activities.....	24.4	25.2	21.3	-3.1	-12.7%
555300001	Real Estate and Rental and Leasing.....	23.5	22.9	20.7	-2.8	-11.9%
600000001	Professional and Business Services	269.3	250.3	233.9	-35.4	-13.1%
605400001	Professional, Scientific and Technical Services.....	123.8	117.6	108.5	-15.3	-12.4%
605411001	Legal Services.....	10.7	10.8	12.6	1.9	17.8%
605412001	Accounting, Tax Preparation, Bookkeeping and Payroll.....	12.9	12.2	8.8	-4.1	-31.8%
605413001	Architectural, Engineering and Related.....	50.9	46.9	38.2	-12.7	-25.0%
605415001	Computer Systems Design and Related Services.....	26.0	25.3	22.8	-3.2	-12.3%
605500001	Management of Companies and Enterprises.....	20.6	19.1	18.2	-2.4	-11.7%
605600001	Administrative, Support, Waste Management and Svcs.....	124.9	113.6	107.2	-17.7	-14.2%
605613001	Employment Services.....	84.2	73.2	63.0	-21.2	-25.2%
605617001	Services to Buildings and Dwellings.....	15.5	16.0	18.2	2.7	17.4%
650000001	Education and Health Services	123.8	126.8	160.0	36.2	29.2%
656111001	Elementary and Secondary Schools.....	4.2	4.4	6.8	2.6	61.9%
656200001	Health Care and Social Assistance.....	116.0	118.7	143.7	27.7	23.9%
656210001	Ambulatory Health Care Services.....	45.4	46.7	58.2	12.8	28.2%
656220001	Hospitals.....	41.5	42.0	48.1	6.6	15.9%
656230001	Nursing and Residential Care Facilities.....	19.4	20.0	22.7	3.3	17.0%
656240001	Social Assistance.....	9.7	10.0	14.7	5.0	51.5%
700000001	Leisure and Hospitality	104.1	101.5	108.4	4.3	4.1%
707100001	Arts, Entertainment and Recreation.....	19.3	18.8	18.0	-1.3	-6.7%
707200001	Accommodation and Food Services.....	84.8	82.7	90.4	5.6	6.6%
707220001	Food Services and Drinking Places.....	78.1	76.5	85.4	7.3	9.3%
707221001	Full-Service Restaurants.....	32.4	31.9	40.1	7.7	23.8%
707222001	Limited-Service Eating Places.....	N/A	31.0	35.2	4.2	13.5%
800000001	Other Services	54.0	54.5	52.5	-1.5	-2.8%
900000001	Government	113.3	113.9	115.8	2.5	2.2%
909100001	Federal Government.....	14.3	13.1	12.9	-1.4	-9.8%
909191201	Postal Service.....	7.2	7.2	6.5	-0.7	-9.7%
909200001	State Government.....	6.9	7.1	7.3	0.4	5.8%
909216111	State Government educational services.....	2.4	2.6	2.5	0.1	4.2%
909300001	Local Government.....	92.1	93.7	95.6	3.5	3.8%
909316111	Local Government educational services.....	58.7	60.2	60.9	2.2	3.7%
909361121	Local Government Junior Colleges.....	3.5	3.7	3.5	0.0	0.0%

© C. McMillion/MBG Information Services

US' 7 1/2 Year Jobs Record: Just 3.5 Million Private Sector Jobs

Net Job growth all in private health care bureaucracies, bars and restaurants

Industry: Nonfarm Jobs (1,000)	January	June	Change: Jan 2001 to June 2008	
	2001	2008	(Thousands)	(Percent)
Total nonfarm.....	132,469	137,640	5,171	3.9%
Total private.....	111,634	115,181	3,547	3.2%
Total private supervisory.....	20,875	20,157	-718	-3.4%
Total private non-supervisory.....	90,759	95,024	4,265	4.7%
Goods-producing.....	24,543	21,505	-3,038	-12.4%
Goods-producing supervisory.....	6,543	5,635	-908	-13.9%
Goods-producing non-supervisory.....	18,000	15,870	-2,130	-11.8%
Service-providing.....	107,926	116,135	8,209	7.6%
Private Service-providing.....	87,091	93,676	6,585	7.6%
Private Services supervisory.....	14,332	14,522	190	1.3%
Private Services non-supervisory.....	72,759	79,154	6,395	8.8%
Natural resources and mining.....	605.0	764	159	26.3%
Logging.....	76.3	57.5	-19	-24.6%
Mining.....	528.3	706.0	178	33.6%
Oil and gas extraction.....	123.5	158.7	35	28.5%
Mining, except oil and gas.....	219.2	229.2	10	4.6%
Coal mining.....	71.3	80.9	10	13.5%
Support activities for mining.....	185.6	318.1	133	71.4%
Construction.....	6,824.0	7,204	380	5.6%
Construction of buildings.....	1,594.5	1620.0	26	1.6%
Residential building.....	782.8	848.7	66	8.4%
Nonresidential building.....	811.7	771.3	-40	-5.0%
Heavy & civil engineering construction.....	945.8	960.0	14	1.5%
Specialty trade contractors.....	4,283.3	4624.4	341	8.0%
Residential specialty contractor.....	1,818.2	2081.1	263	14.5%
Nonresidential specialty contractor.....	2,465.1	2543.3	78	3.2%
Manufacturing.....	17,114.0	13,537	-3577	-20.9%
Supervisory workers.....	4,878.0	3,776	-1102	-22.6%
Non-supervisory workers.....	12,236.0	9,761	-2475	-20.2%
Durable goods.....	10,813.0	8,577	-2236	-20.7%
Supervisory workers.....	3,255.0	2,489	-766	-23.5%
Non-supervisory workers.....	7,558.0	6,088	-1470	-19.4%
Wood products.....	587.7	476.7	-111	-18.9%
Nonmetallic mineral products.....	556.0	480.8	-75	-13.5%
Primary metals.....	607.7	447.6	-160	-26.3%
Fabricated metal products.....	1,759.2	1533.7	-226	-12.8%
Machinery.....	1,452.7	1190.0	-263	-18.1%
Computer and electronic products.....	1,871.3	1249.2	-622	-33.2%
Computer and peripheral equipment.....	304.6	185.6	-119	-39.1%
Communications equipment.....	246.0	132.9	-113	-46.0%
Semiconductors and electronic components...	714.0	421.5	-293	-41.0%

© C. McMillion/MBG Information Services

US' 7 1/2 Year Jobs Record: Just 3.5 Million Private Sector Jobs

Net Job growth all in private health care bureaucracies, bars and restaurants

Industry: Nonfarm Jobs (1,000)	January	June	Change: Jan 2001 to June 2008	
	2001	2008	(Thousands)	(Percent)
Electronic instruments.....	491.1	445.5	-46	-9.3%
Electrical equipment and appliances.....	582.6	422.9	-160	-27.4%
Transportation equipment.....	1,991.6	1,645.8	-346	-17.4%
Motor vehicles and parts.....	1,249.4	915.8	-334	-26.7%
Furniture and related products.....	676.6	503.7	-173	-25.6%
Miscellaneous manufacturing.....	727.5	626.9	-101	-13.8%
Nondurable goods.....	6,301.0	4,960	-1341	-21.3%
Supervisory workers.....	1,623.0	1,287	-336	-20.7%
Non-supervisory workers.....	4,678.0	3,673	-1005	-21.5%
Food manufacturing.....	1,554.2	1,470.1	-84	-5.4%
Beverages and tobacco products.....	209.6	191.3	-18	-8.7%
Textile mills.....	364.7	151.9	-213	-58.3%
Textile product mills.....	224.9	149.9	-75	-33.3%
Apparel.....	456.6	195.2	-261	-57.2%
Leather and allied products.....	63.4	34.2	-29	-46.1%
Paper and paper products.....	598.5	457.5	-141	-23.6%
Printing and related support activities.....	798.2	602.1	-196	-24.6%
Petroleum and coal products.....	121.4	114.3	-7	-5.8%
Chemicals.....	976.8	862.6	-114	-11.7%
Plastics and rubber products.....	932.3	731.2	-201	-21.6%
Trade, transportation, and utilities.....	26,259.0	26,449	190	0.7%
Wholesale trade.....	5,860.2	6,037.6	177	3.0%
Durable goods.....	3,201.5	3,109.8	-92	-2.9%
Nondurable goods.....	2,048.1	2,087.2	39	1.9%
Electronic markets; agents/brokers.....	610.6	840.6	230	37.7%
Retail trade.....	15,360.3	15,325.6	-35	-0.2%
Motor vehicle and parts dealers.....	1,856.2	1,889.3	33	1.8%
Automobile dealers.....	1,222.3	1,219.8	-3	-0.2%
Furniture and home furnishings stores.....	548.2	568.2	20	3.6%
Electronics and appliance stores.....	569.2	533.1	-36	-6.3%
Building material/garden supply stores.....	1,149.7	1,235.2	86	7.4%
Food and beverage stores.....	2,975.5	2,881.9	-94	-3.1%
Health and personal care stores.....	947.4	993.8	46	4.9%
Gasoline stations.....	931.9	844.6	-87	-9.4%
Clothing and accessories stores.....	1,333.0	1,495.3	162	12.2%
Sporting goods, hobby, book, music stores.....	698.4	652.0	-46	-6.6%
General merchandise stores.....	2,840.5	2,936.2	96	3.4%
Department stores.....	1,765.5	1,514.0	-252	-14.2%
Miscellaneous store retailers.....	1,013.7	858.6	-155	-15.3%
Nonstore retailers.....	496.6	437.4	-59	-11.9%

© C. McMillion/MBG Information Services

US' 7 1/2 Year Jobs Record: Just 3.5 Million Private Sector Jobs**Net Job growth all in private health care bureaucracies, bars and restaurants**

Industry: Nonfarm Jobs (1,000)	January	June	Change: Jan 2001 to June 2008	
	2001	2008	(Thousands)	(Percent)
Transportation and warehousing.....	4,438.8	4,526.7	88	2.0%
Air transportation.....	631.8	501.9	-130	-20.6%
Rail transportation.....	229.1	233.0	4	1.7%
Water transportation.....	55.0	63.6	9	15.6%
Truck transportation.....	1,407.0	1,404.2	-3	-0.2%
Transit & ground passenger transport.....	372.3	416.2	44	11.8%
Pipeline transportation.....	46.0	42.8	-3	-7.0%
Scenic and sightseeing transport.....	30.2	31.0	1	2.6%
Support activities for transport.....	546.5	587.8	41	7.6%
Couriers and messengers.....	599.7	587.1	-13	-2.1%
Warehousing and storage.....	521.1	659.1	138	26.5%
Utilities.....	599.7	558.8	-41	-6.8%
Information.....	3,709.0	3,000	-709	-19.1%
Publishing industries, except Internet.....	1,045.7	877.2	-169	-16.1%
Motion picture and sound recording.....	384.1	382.7	-1	-0.4%
Broadcasting, except Internet.....	346.2	319.7	-27	-7.7%
Telecommunications.....	1,455.3	1,018.5	-437	-30.0%
Data processing, hosting and related.....	318.9	272	-47	-14.7%
Other information services.....	159.1	130.2	-29	-18.2%
Financial activities.....	7,755.0	8,216	461	5.9%
Finance and insurance.....	5,717.5	6,089.6	372	6.5%
Monetary authorities - central bank.....	22.8	20.9	-2	-8.3%
Credit intermediation and related.....	2,547.9	2,796.5	249	9.8%
Depository credit intermediation.....	1,677.3	1,820.1	143	8.5%
Commercial banking.....	1,240.6	1,345.0	104	8.4%
Securities, commodity, investments.....	838.1	866.3	28	3.4%
Insurance carriers, related activities.....	2,226.2	2,318.1	92	4.1%
Funds, trusts, other financial vehicles.....	82.5	87.8	5	6.4%
Real estate and rental/leasing.....	2,037.3	2,125.9	89	4.3%
Real estate.....	1,335.7	1,466.6	131	9.8%
Rental and leasing services.....	672.8	627.7	-45	-6.7%
Lessors of nonfinancial intangibles.....	28.8	31.6	3	9.7%
Professional and business services.....	16,828.0	17,931	1103	6.6%
Professional and technical services.....	6,899.0	7,854.8	956	13.9%
Legal services.....	1,074.3	1,172.3	98	9.1%
Accounting and bookkeeping.....	878.1	979.2	101	11.5%
Architectural and engineering.....	1,272.8	1,467.3	195	15.3%
Computer systems design and related.....	1,328.4	1,414.4	86	6.5%
Management and technical consulting.....	712.9	1,013.1	300	42.1%
Management of companies and enterprises.....	1,804.9	1,844.6	40	2.2%
Administrative and waste services.....	8,124.0	8,231.6	108	1.3%
Administrative and support services.....	7,808.4	7,864.5	56	0.7%

© C. McMillion/MBG Information Services

US' 7 1/2 Year Jobs Record: Just 3.5 Million Private Sector Jobs

Net Job growth all in private health care bureaucracies, bars and restaurants

Industry: Nonfarm Jobs (1,000)	January 2001	June 2008	Change: Jan 2001 to June 2008 (Thousands)	(Percent)
Employment services.....	3,763.1	3,362.3	-401	-10.7%
Temporary help services.....	2,564.0	2,424.8	-139	-5.4%
Business support services.....	785.3	784.0	-1	-0.2%
Services to buildings and dwellings.....	1,598.5	1,870.6	272	17.0%
Waste management and remediation.....	315.6	367.1	52	16.3%
Education and health services.....	15,359.0	18,830	3471	22.6%
Educational services.....	2,446.7	3,053.0	606	24.8%
Health care and social assistance.....	12,912.2	15,777.2	2865	22.2%
Health care.....	11,012.8	13,279.2	2266	20.6%
Ambulatory health care services.....	4,389.8	5,656.8	1267	28.9%
Offices of physicians.....	1,878.3	2,271.7	393	20.9%
Outpatient care centers.....	393.3	516.5	123	31.3%
Home health care services.....	628.8	951	322	51.2%
Hospitals.....	3,995.8	4,635.9	640	16.0%
Nursing and residential care facilities.....	2,627.2	2,986.5	359	13.7%
Nursing care facilities.....	1,529.3	1,608.8	80	5.2%
Social assistance.....	1,899.4	2,498.0	599	31.5%
Child day care services.....	701.3	856.6	155	22.1%
Leisure and hospitality.....	11,977.0	13,723	1746	14.6%
Arts, entertainment, and recreation.....	1,798.5	2,023.0	225	12.5%
Performing arts and spectator sports.....	377.5	443.3	66	17.4%
Museums, historical sites, zoos & parks.....	112.9	132.3	19	17.2%
Amusements, gambling, & recreation.....	1,308.1	1,447.4	139	10.6%
Accommodations and food services.....	10,178.4	11,699.7	1521	14.9%
Accommodations.....	1,895.4	1,855.4	-40	-2.1%
Food services and drinking places.....	8,283.0	9,844.3	1561	18.8%
Other services.....	5,204.0	5,527	323	6.2%
Repair and maintenance.....	1,261.9	1,247.7	-14	-1.1%
Personal and laundry services.....	1,255.5	1,312.4	57	4.5%
Membership assocs & organizations.....	2,686.3	2,966.8	281	10.4%
Government.....	20,835.0	22,459	1624	7.8%
Federal.....	2,753.0	2,745	-8	-0.3%
Federal, except U.S. Postal Service.....	1,873.6	2,014.3	141	7.5%
U.S. Postal Service.....	879.6	731.0	-149	-16.9%
State government.....	4,805.0	5,186.0	381	7.9%
State government education.....	2,027.0	2,349.4	322	15.9%
State government, ex education.....	2,777.9	2,836.2	58	2.1%
Local government.....	13,277.0	14,528.0	1251	9.4%
Local government education.....	7,384.7	8,044.1	659	8.9%
Local government, ex education.....	5,892.1	6,483.6	592	10.0%

U.S. Dept. of Labor, BLS and MBG Information Services "www.mbginfosvcs.com"

Michigan Metropolitan Area (MSA) Definitions

<u>Metro Areas</u>	<u>Counties</u>
Ann Arbor	Washtenaw County
Battle Creek	Calhoun County
Detroit-Warren-Livonia	Lapeer, Livingston, Macomb, Oakland, St. Clair, Wayne Counties
Detroit-Livonia-Dearborn	Wayne County
Flint	Genesee County
Grand Rapids-Wyoming	Barry, Ionia, Kent, and Newaygo Counties
Holland-Grand Haven	Ottawa County
Jackson	Jackson County
Kalamazoo-Portage	Kalamazoo and Van Buren Counties
Lansing-East Lansing	Clinton, Eaton, and Ingham Counties
Muskegon-Norton Shores	Muskegon County
Niles-Benton Harbor	Berrien County
Saginaw-Saginaw Township North	Saginaw County